

FACILITIES SUBCOMMITTEE MEETING

Gilroy Unified School District-Board Room

June 1, 2018 at 9:00 a.m.

*Meet at Gilroy High School at 8:30 a.m. for walk-through



1.

ITEM	PAGE #
A. City of Gilroy, Giron Awoke & Gary Heap: Update on City projects (<i>Time Certain: 9:30 a.m.</i>)	
B. Approval of minutes: May 4, 2018	1-5

2. Facilities & New Construction (Jim Bombaci)

ITEM	SITE	VENDOR	COST	FUNDING SOURCE	PAGE #
A. Pipeline Safety Hazard Assessment and Dam Inundation study	Brownell MS	Placeworks	\$4,785	Measure E	6-14
			\$4,765		
B. Science Lab	Gilroy Early College Academy	Hollister Moving Company	\$5,600	Measure E	15-17

3. Maintenance (Dan McAuliffe)

ITEM	SITE	VENDOR	COST	FUNDING SOURCE	PAGE #
A. Auto Spray Booth (DSA requirements of submission and approval as per Jerome Zalinski)	Gilroy HS	Marathon	\$83,245.84 *Architectural costs for DSA package TBD	\$60,000.00 CTE \$3,245.84 One Time Funds \$20,000.00	18-25
B. Canvas Lunch Shade Covers	Luigi Elementary	NSP3	\$18,538.16	Deferred Maintenance	26-31
C. Metal Outdoor Lunch Tables	Glen View, El Roble, Luigi, Rod Kelley	Belson	\$83,495.21	RRM 18/19	32-40
D. Las Animas Beautification	Las Animas	Belson	\$6,052.73	Las Animas Parent Club	41-48
E. Flagpole	Gilroy HS Stadium	P.H. Bolander	\$3,500.00 +/- *Waiting for written quote	RRM 18/19	49-51
F. Flooring replacements	Misc. sites	Cottage Floors	\$55,890.08	RRM 18/19	52-76
G. Door Alarms	Christopher HS	Grainger	Approximately \$110.00 each depending on model	RRM	77-78
H. Roof Needs Assessments and Recommendations	Luigi, Gilroy HS, Brownell	TREMCO	Estimates: Luigi \$140.000 Brownell \$75.000 GHS \$420.000	TBD	79-90
I. Painting	Christopher HS	Information Only		Christopher family	91-95

4. Alvaro Meza's Items

ITEM
A. Lease-Leaseback Discussion

Facilities Subcommittee Meeting Minutes: May 4, 2018

Present:

Patricia Midtgaard
James Pace
Dan McAuliffe
James Bombaci
Cheryl Galloway
Patricia Mondragon
Anna O'Connor
Kimberly Mason
Alvaro Meza
Marco Sanchez
Maribel Guizar
Gary Heap
Narom Than

City of Gilroy: Update on City Projects

- Gary Heap from City of Gilroy, City Engineer, Transportation Engineer
- Update on 10th street
- Orchard intersection & 10th street
- 10th street extension to be widened and as part of that project we were going to have a drop off area along the school site
- Secondary minor component is the area around Princevalle (island) to see if it needs to stay
- Issue is since it is only one lane if it were pushed back a little may be able to make traffic flow more easily
- Updates is at this point, finding has tripled in cost, are continuing with the design
- 60-70% complete expect to complete this year
- Will continue to look for funding, at this point it is unfunded project
- Do not have funding, have to go through CFP process
- Regards to the Princevalle driveway and the adjacent it looks like at some point in the past there was a diverter put there to keep the students from coming out of parking lot and into the neighborhood.
- Neighborhood traffic management plan will give the community the opportunity to come to us
- Check in with the neighborhood and come up with an alternative design
- Along Princevalle there are no speed limit sign and no notification of traffic stops
- Looking through some documentations will be attending GHS parent club on the 29th
- The school zone sign something else we are looking into trying to make a round with the schools in the city this year, don't have time
- Bringing in 25 new units every month
- GPAC meeting, Santa Teresa and 1st - 250 town homes
- Two apartment complexes, one is up on Monterey on Farrell and one is down on 10th
- 10th and Alexander first occupancy later on in September time frame
- One on Monterey (harvest park) all look complete, 98 single family homes
- Water line project Monterey to Santa Teresa is full dig out the schedule and information is on the city's website will be posted on Monday
- Sewer lines are 24 and water lines are 12
- Water lines going to take a lot longer, sewer line a couple of weeks
- After that cal trains will come in and paint
- Flashing beacons will have to go out for separate funding

Approval of minutes:

- Alvaro Meza accepted motion to accept
- Pat Midtgaard seconded motion

FACILITIES & NEW CONSTRUCTION

EI Roble Painting Project/Bid Award

- Bid opening and it was very favorable to us
- The high end was \$224K and low end was \$109K
- Fence is black body is tan, roof is brown and doors are green
- Colors worked out with the school so they are ready to go
- Premised that they would not touch the murals
- \$109K (satellite painting)
- The next closest one was \$117K

GHS Math Building (Desks)

- Had 3 different vendors come in
- Looking at 34 desks per rooms, 20 classrooms, teachers desks
- GHS has chosen One Work Place, sit stand desk
- It is for math classrooms, this is something new that we are introducing
- \$243K for all the furniture, will add a couple of desks and chairs
- The buildings come with shelves and cabinets
- \$The 244K is for furniture
- Maribel got a quote for TV stands, need to set up for displays
- They will be wireless and will be interactive
- Will use with laptops (teachers will)
- In the future if we go with a touch screen or tablet
- With tablet it is mobile with the laptop it is not
- Would like the tablet to be the new standard. One per teacher so the teacher is moving around
- At Rucker the chrome books tilt, they have the yogas and they are touch screen, we got a demo chrome book they have a bigger screen, the screens are 11 inches the ones at Rucker
- The cost would be \$260K just for tablet
- Maribel will put a few quotes together so we have an idea of what it would cost, we do not have to order today to have it there by August
- If we are thinking ahead what is our new vision for the classroom
- Would like to start with the display as the new standards in the math building
- The majority of our devices are chrome books, right now the best solution is cloud print and it is not the greatest thing and it is not very stable trying to find ways to move away from the need of printing
- \$378K for both
- Use developer fees for the new expansion of the campus to update everything
- For the bulk of it is going to be the developer fees

MAINTENANCE

CHS Paint request

- By the Principal at CHS
- Put out to 5 painters on CUPCA list to come to a job watch next Wednesday
- Going to be fairly substantial something our crew cannot keep up with have 2 painters spend the majority of time doing lines and graffiti removal
- Funding Source CHS family
- Ken Christopher approached Caroline and walked the facility and willingness to help with cost

GHS Bat Exclusion

- They migrated to the other areas of campus
- Same thing-inject urethane foam in crevice
- Have to act soon or until September or October before they start to establish the nest
- Yes all agree, take to the next board meeting, health issue

GHS Wrestling Room Wall Mirror Removal

- \$700 to remove

- Very good likely we can install all of these in the weight room, will not be perfectly in a row will be able to use either 6 panels or 7 if they are not and we cannot take the existing glue off.
- Morgan Hill glass feel confident
- Safety issue, have broken two mirrors since they have been there and the wrestling room has been in
- Not necessary with the low cost to take this to the Board

SVMS Paint/Floors in Dance Room

- SVMS and Gilroy were part of this NSU grant we approved it and funded the proposal this is just approval of the plan
- Now that we implement the elements needs to go through own process subcommittee etc.
- Patricia is going to go through the background how it involves painters and facility
- The NSU grant will be able to support us with changing the color of the room and the instructor will let the students know turn to the pink wall etc.
- Resurfacing of the floor will be able to support the students movement right now a lot of dust gets picked up because of the surface of the room
- Those types of items will have the parents fundraise and have parent volunteers
- Have a cost estimate of \$9,735 was included in the grant
- Important to check the quote if it is good we are golden otherwise we have to do due diligence to bring to the board
- We should get a competitive quote
- Put item on the next agenda, Dan will help us to check will include as the walk through with Christopher HS,
- Should we explore other surfaces that may be dance floor appropriate
- There are some surfaces that can be laid down

SVMS Gym Volleyball Equipment

- Holes that hold up volleyball net
- Refinished the floor at SVMS 2 years ago at the time we had a supplemental quote from the vendor to install support there were two at the site he refused because said not the right support
- HY floors is no longer one of our vendors
- Coastal sport flooring 9700 not sure how it would be funded?
- Parent in SPAC from SVMS said our gym cannot host
- Will use deferred maintenance funds
- Will take this to the board on the 17th will contact coastal sports and get them on the schedule

Rucker Reading Garden

- Parent club has a grant
- Lowes tool box that they can fund this
- This project will trigger full DSA access review with that site we would be spending a considerable amount of money
- \$150-200K range possibly
- Removing asphalt and replacing with concrete putting seat benches in which don't require instructional review because of the site
- 20% on upgrades
- Funded by Lowes tool box grant
- Think they brought it up to us and we agreed.
- Cannot do it
- Drainage issues, etc.
- Also set a precedence and the district would be contributing funds and any enhancement to gardens have been done by fundraising etc.

Elementary sites Safe School Locks Update

- Got a quote for all eight, same company that did GHS and MS did a complete site review came up with assessment
- All attached quote a few pages
- \$923K
- This was one time funds
- They can do 4 elementary over the summer if approved on May 17th meeting
- Ask School site solutions for a quote
- Will need to get a schedule

- Took them all summer to do the 3 middle schools
- Dr. Flores feels real strongly we need to do it, we need to do this will take to the board on the 17th

Elementary sites, Playground Signage

- It is permanent instructional signage which determines what playground is appropriate and what needs to be used
- Right now we don't have at some of our sites the signage that says what is age appropriate
- It is a big safety factor and a liability factor
- Had our insurance group come out last week
- \$150K to replace
- Looking with another company next week to look at that
- It is 18 years old it has been patched several times
- The sign at ADB is made of the same product that the playground is made out of
- Will take to the board on the 17th

ALVARO'S

GECA Plaque Class of 2018

- Class of 2018 is proposing to fund a plaque
- The students are driving this idea
- Have two options
- If it approved we would recommend option one and balancing those two things like it looks in the picture
- Might want to put it over by the cafeteria
- Try to fit on option one and if it looks odd will move it to the next option

Brownell Update information

- Had our first meeting with Superintendent, Principal 2 weeks ago
- Second meeting at the site last week
- Our second meeting at the school site with staff was about how they see teaching evolving and what they see the campus being about
- Another meeting next Wednesday and with leadership
- From there plan on developing site what we can do with the building and also trying to figure out how big this campus needs to be and expansion, etc.
- Put together a schedule of project overall
- Earliest time frame set up to start and then meet with staff to present schematic design
- In the meantime talking about site and security how they access the site etc.
- Expenditure plan see the design process map of what we are doing how long it is going to take etc.
- Design development document and we can start bringing contractors on board
- Talking about lease leaseback for this project to enable us to get the contractor on board to enable us to start building this project to help with overall procurement
- Topic of bond issuance and conversation this is measure E series B
- Supposed to take resolution to the board may 17th
- The consensus was pushing everything towards third street side
- David and Dr. Flores have talked and the MPR and gym, and shade structure not moving so they may want to know can we design a building around these structures
- At Brownell the GHS portables or 6th grade wing

GECA , Dental Assistant Program Proposal

- Proposal gone through cabinet team, felt facility related
- Gavilan is asking us to partner with them
- Right across from Mt. Madonna HS where we had a childcare program
- Doing this would no longer allow the childcare at this location, would retrofit the existing portable
- Gavilan is proposing to start a program would cost \$200K
- From our perspective spoke with Greg Camacho-Light, can start offering Saturday classes for MMHS as an intro
- Gavilan would have it Monday through Friday as they would operate between
- Gavilans class schedule 9:30 -3:00 would run twice a year from September through January and then take January through June

- July and August no activity, we can come in on a Saturday, max of 25 students
- Adult Ed. budget \$3k a year
- Will come back to this
- That is a licensed child care facility which is very hard to get

Vandal Watch, Luigi Aprea

- Have a vandal watch around Black Hawk Dr., it is behind the champion portable,
- Connected with Tami
- Will come back to this

CHS Network Proposal

- CHS is making request
- This broadcast proposal request is the ability to broadcast sporting good
- Would turn around and sell this thing to have people
- The camera goes on the booth and those are static but they need an internet connection to stream those
- The \$17K is only for the equipment
- All covered by CHS funds
- Dr. Flores wants to know more about it
- Have Caroline or the athletic director come talk to us more about it
- Let's have Ryan Dequin come and have him explain why they want it

SAFETY & ENERGY EDUCATION

Facilities Use

- Last time we talked about this asked to come back with a comparison
- We come up with this nonprofit youth pricing with that said if you look at the other side
- For profit, they are making money off of us and we are charging them for capital replacement as well
- We last did it 3 years ago. Had certain groups that we gave a percentage increase each year.
- Have been working with NJB, Gators, Infinity etc. a lot of the nonprofit groups those are our coaches sometimes who in the summer they run a club so the kids can continue to practice their skills
- On May 17th would you just like the information on where we are at etc. or do we want to look at increase in prices
- Took in \$250K close to this last year
- All agreed to go to the green levels
- If anybody goes in our kitchen we require a food service person, it is required for someone to be with them.
- Those are all add ons
- GHS Theater and RU Theater and black box at CHS, if someone wants to use that equipment they have to bring someone in for that stuff. Would like to add that as well, need training
- The city of Gilroy with joint use has been trained to use the equipment
- Information first to the board
- May 17th info only
- May 31st would be action

Lighting Project

- \$14K to put lighting here
- Brought out Ecogreen same company as what the City is using.
- Want to put lights on the roof have been working with city
- \$14,230, we are a couple hundred dollars shy
- City is paying for it we currently have none
- Would like to bring in on consent on the 17th
- WE have had this money for two years and will go away June 30th if not spent
- All agree

Prop 39 Lighting and HVAC

- GPS they also received money they got approved would like to take this on the 17th, does not cost us anything
- Wanted to put in LED lighting in the gym and exterior lighting
- Consent on the 17th
- All agree



May 18, 2018

James D. Bombaci
Director of Facilities Planning and Management
Gilroy Unified School District
7810 Arroyo Circle
Gilroy, CA 95020

Transmitted via e-mail: kayla@schoolsitesolutions

Subject: Proposal: Pipeline Safety Hazard Assessment and Dam Inundation Study for Brownell Middle School [P2018-0521N]

Dear Mr. Bombaci:

Thank you for inviting PlaceWorks to submit this Pipeline Safety Hazard Assessment (PSHA) and Dam Inundation Study scope of work and cost estimate for Brownell Middle School. It is our understanding that the Gilroy Unified School District (District) is evaluating modernizations to the existing middle school site at 7800 Carmel Street in Gilroy, Santa Clara County, California (site).

The California Department of Education (CDE) requires a PSHA to be completed for all hazardous liquid pipelines, natural gas pipelines, and large volume (>12 inches in diameter) water pipelines that are located within 1,500 feet of a new school site. Based on a review the *Phase I Environmental Site Assessment and Title V Environmental Hazards Review* prepared by Padre Associates, Inc. (2018), there is one Pacific Gas and Electric (PG&E) natural gas transmission pipeline north of the site beneath 1st Street/Highway 152. The high pressure natural gas line could impact the school site.

Based on a review of dam inundation maps and studies from the California Governor's Office of Emergency Services (CalOES), the school site is located approximately 7.1 miles southeast of the Uvas Dam and is located within the dam inundation zone. This analysis will be performed in accordance with the California Code of Regulations (CCR), Title 5, Section 14010 (g) requirements. The CCR regulation states that a school site shall not be within an area of flood or dam flood inundation unless the cost of mitigating the flood or inundation impact is reasonable. A comprehensive dam inundation study, with flood evacuation procedures included within the study, will be prepared to satisfy CDE requirements.

Task 1 – Pipeline Safety Hazard Assessment

There is one PG&E natural gas transmission pipeline and no other hazardous liquid pipelines within 1,500 feet of the school site. This pipeline may be within 50 feet of the school site, depending on its location beneath 1st Street, which would trigger a Stage 3 analysis as per the CDE protocol. A Stage 3 analysis is a more detailed assessment that verifies and validates the Stage 2 analysis results.

In addition, local water purveyors will be contacted to determine if there are any large-volume water pipelines within 1,500 feet of the school site. The PSHA will consist of the following tasks:



Determine Pipeline Characteristics. The following agencies will be contacted to obtain information regarding the pipelines:

- » Pacific Gas and Electric Company – pipeline maps, information on pipeline operating pressures, dates of installation, recent repairs, and location of isolation valves.
- » Water purveyors – contact the local water purveyors to water line information for large diameter water pipelines within 1,500 feet of the school site.

Determine Land Use and Local Terrain Data. Adjacent land uses, terrain, structures, street grade, storm drains, and utility easements will be identified, with emphasis on the following:

- » Structural features, such as retaining walls, buildings, open storm drains, etc. that could block a jet flame or flammable vapor cloud
- » Potential combustion sources, both stationary and mobile, between the pipeline and the school site, such as motor vehicles, residential home water heaters, commercial/industrial facilities with external combustion sources (i.e., boilers).

Conduct Consequence Analysis. Given a release from the natural gas pipeline and petroleum pipeline, the following hazards are considered:

- » Radiant heat from a jet flame
- » Flammable vapor cloud
- » Unconfined vapor cloud explosion (UVCE), which results in a blast overpressure wave.

The discharge rates and durations for both pipeline ruptures and leaks will be determined. Two types of release scenarios will be assumed: 1) a complete line break along the pipeline route that would occur 20% of the time, and 2) a leak through a one-inch hole that would occur 80% of the time. The distance at which no adverse impact is expected to occur to human health will be determined, which is defined as follows:

- » Distance to direct contact with a jet flame
- » Distance to a radiant heat level of 5,000 BTU/hr-ft²
- » Distance to a flammable vapor cloud's lower flammability limit (LFL)
- » Distance to a 2.5 psig overpressure level for the UVCE.

Estimate Potential Risk. Based on the results, the probability of a hazard footprint reaching the school will be calculated, as well as the fatality risk to students or staff attending the school. If the calculated fatality risk is less than one in a million (i.e., 1×10^{-6}), the risk is not considered significant and no further risk analysis is required. If the calculated risk is greater than one in a million, potential mitigation measures will be evaluated. In addition, population risk estimates will be calculated, as per the latest CDE protocol.

Estimate Potential Flooding from Water Pipelines. For the identified large diameter (≥ 12 inches) water pipelines identified within 1,500 feet of the school site, the potential for flooding will be



evaluated in accordance with CDE guidelines. Although no specific criteria have been established by CDE as a threshold of significance for flooding at a school site, a water depth of 12 inches or greater is a trigger that warrants further evaluation. The results of modeling efforts will be documented in a draft report that is signed and stamped by a California Registered Engineer.

Task 2 – Dam Inundation Study

Based on a review of dam inundation maps and studies from the California Governor’s Office of Emergency Services (CalOES), the school site is located approximately 7.1 miles southeast of the Uvas Dam and is located within the dam inundation zone. Additionally, the site is 10.9 miles southeast of Leroy Anderson Dam and is located within the Anderson Dam inundation zone. This is not necessarily a constraint that would prevent occupancy of the school site. However, the potential risk to the safety of students and staff at the school site needs to be evaluated. The dam inundation study would include the following tasks:

- » Determine the structural integrity and safety of the dams,
- » Evaluate the likely severity of dam failure,
- » Determine the potential flood levels at the school site and warning time for evacuation (based on the flood inundation maps and flood travel times),
- » Determine the impact of dam failure on student and staff safety, and
- » Develop emergency notification and evacuation procedures for the school site, if needed.

If information obtained from the Division of Safety of Dams and modeling efforts indicate that potential flood levels will be above a level of concern (i.e., 12 inches according to CDE guidelines) or there is not adequate warning time for evacuation, potential design criteria and emergency notification and evacuation procedures will be proposed. A draft copy of the report will be provided for your review prior to final submittal.

Proposed Schedule

It is anticipated that a draft report will be available for review within five to six weeks from authorization to proceed. We will work to expedite the process but it is dependent on receiving information from the pipeline agencies in a timely manner. The reports will be signed and stamped by a registered engineer.



Cost Estimate

PlaceWorks will provide the services described herein in accordance with our standard fee schedule. The estimated cost is \$9,550.00 (see table below).

Task 1 – Pipeline Safety Hazard Assessment

TASK ELEMENT	UNIT	UNIT COST	NO. UNITS	COST
BURDENED LABOR COST				
Principal Engineer	Hour	\$230	2	\$460
Senior Engineer	Hour	\$165	20	\$3,300
Project Scientist	Hour	\$120	6	\$720
Graphic Artist I	Hour	\$90	2	\$180
Clerical	Hour	\$75	1	\$75
LABOR COST SUBTOTAL				\$4,735
OTHER DIRECT COSTS				
Copies, Postage, Etc.	Each	\$50	1	\$50
OTHER DIRECT COSTS SUBTOTAL				\$50
TOTAL ESTIMATED BUDGET				\$4,785.00

Task 2 – Dam Inundation Study

TASK ELEMENT	UNIT	UNIT COST	NO. UNITS	COST
BURDENED LABOR COST				
Principal Engineer	Hour	\$230	4	\$920
Senior Engineer	Hour	\$165	20	\$3,300
Project Scientist	Hour	\$120	2	\$240
Graphic Artist I	Hour	\$90	2	\$180
Clerical	Hour	\$75	1	\$75
LABOR COST SUBTOTAL				\$4,715
OTHER DIRECT COSTS				
Mileage, Copies, Postage, Etc.	Each	\$50	1	\$50
OTHER DIRECT COSTS SUBTOTAL				\$50
TOTAL ESTIMATED BUDGET				\$4,765.00



Acknowledgement

This proposal shall remain valid for a period of 90 days from the time of submittal. The attached Service Authorization, which includes our General Terms of Consulting Agreement, is a part of this proposal. If the contents of this Proposal and Agreement are satisfactory, please indicate your approval by signing the Service Authorization and sending it to our corporate office. As Principal, I am authorized to bind PlaceWorks and the project team to the contents of this proposal.

We are excited about the opportunity to assist the Gilroy Unified School District and will work with you to expedite the analysis. If you have any questions regarding the contents of this proposal, please feel free to contact Steve Bush at 510.848.3815 or by e-mail at sbush@placeworks.com.

Respectfully submitted,

PlaceWorks

Steve Noack, AICP
Principal

A handwritten signature in blue ink, appearing to read 'Steve Noack'.

Steve Bush, PE
Senior Engineer

A handwritten signature in blue ink, appearing to read 'Steve Bush'.



SERVICE AUTHORIZATION

PROJECT NO.	P2018-0521N	DATE	May 18, 2018
PROJECT NAME	Pipeline Safety Hazard Assessment and Dam Inundation Study for Brownell Middle School		

TYPE OF AUTHORIZATION:
☒ Fixed Price Project ☐ Time and Materials Project

☐ Contract Extension ☐ Meetings Extra to Contract

Reimbursables: ☐ No Charge ☐ Extra to Contract ☒ 10% Markup on Subconsultants

RETAINER:

\$ _____

☐ Yes*

☒ No

*All retainers are either applied to the final invoice or refunded at the close of the project.

BUDGET AMOUNT:

\$ 9,550 _____

☒ Not to Exceed

☐ Estimated

AGREEMENT BETWEEN:

CLIENT	Gilroy Unified School District	CONSULTANT	PlaceWorks
STREET ADDRESS	7810 Arroyo Circle	STREET ADDRESS	3 MacArthur Place, Suite 1100
CITY STATE AND ZIP	Gilroy, CA 95020	CITY STATE AND ZIP	Santa Ana, CA 92707
CONTACT	James D. Bombaci	CONTACT	Kara L Kosel for Steve Bush
Hereinafter referred to as "Client."		Hereinafter referred to as "Consultant."	

This document authorizes the Consultant to execute the following services for the Client as indicated below:

SCOPE AND DURATION OF SERVICES:

See the attached signed scope of work for the Pipeline Safety Hazard Assessment and Dam Inundation Study for Brownell Middle School dated May 18, 2018.

SCHEDULE:

Billing will be monthly based upon our standard hourly rates of \$45 to \$250, depending upon the professional's level of expertise.

GENERAL TERMS OF CONSULTING AGREEMENT:

These General Terms are a part of this contract. All of the services to be provided are referred to collectively as the "Work." This Proposal expires if the Agreement is not signed within 90 days from the date that the proposal was issued.

(1) Acceptance and Authorization to Proceed. When Client signs and returns to Consultant a copy of this Proposal or Service Authorization, an Agreement will be formed authorizing Consultant to proceed with the Work as described.



(2) Performance by Consultant. Consultant will use all reasonable efforts to cause the Work to be performed by qualified persons under the supervision of Consultant. Except as provided below, the Work will proceed in accordance with the schedule included in this Agreement.

(3) Scope of Work. The scope of services set forth in this Agreement is based on facts known to Consultant at the time Consultant signed the Proposal or Service Authorization, including, if applicable, information supplied by Client. For some projects involving conceptual or process development services, scope may not be fully definable during initial phases. As the project progresses, facts discovered may indicate that scope must be redefined. Consultant will promptly provide Client with an amendment to this Agreement to recognize the additional information learned and changes in defining the scope and pricing for the Work. Client will have fifteen (15) days after receiving the proposed amendment to sign and return the amendment. If Client fails to sign and return the amendment within that time, Consultant may suspend work until satisfactory arrangements are agreed to in writing by Consultant and Client.

(4) Coordination with Client. Consultant and Client shall cooperate in proceeding with the Work under the direction and approval of the Client's Authorized Representative identified above, which representative or an alternate shall be available for Consultant at all reasonable times. Consultant and Client, recognizing that time is of the essence, agree that oral communications and instructions may be necessary. Consultant will, in the interest of the project, comply with such oral instructions. However, Consultant will promptly confirm its receipt of the oral instructions by sending Client a written memorandum by electronic or regular mail. The instructions will be deemed confirmed by the Client if the Consultant does not receive written withdrawal of or changes to the instructions within five (5) days after Consultant sent the confirmation to Client. If the instructions require changes in scope and pricing for the Work, Consultant will provide Client with an amendment for signature. Client will provide Consultant with access to the property which is the subject of the Work, along with all reports and other information which Client has concerning the Work.

(5) Charges for Work. Client will be charged for, and Client shall pay for without deduction or offset, the Work performed, in accordance with Consultant's current schedule of charges, billing rates, and expense reimbursement policies. Work will be limited by the amount included in the total of estimated costs stated in the proposal unless an increase is authorized in writing by Client. Although Consultant's schedule of charges and billing rates is subject to periodic review and revision, the current schedule will remain in effect for six months from the date a Proposal or Service Authorization is submitted by Consultant. Changes in the scope of the Work must be made in writing and will be charged for in accordance with this Agreement.

(6) Unanticipated Delays. Consultant shall not be liable for time delays or damages resulting from the actions or inactions of government agencies, including but not limited to, permit processings, environmental impact reports, general plans and amendments, and zoning matters. If the Work has not been completed in accordance with the schedule included in this Agreement, through no fault of Consultant, and the parties agree to an extension of the schedule, the fee schedule will be adjusted automatically to Consultant's current posted billing rates. Changes in a Client's Project Manager or changes in government plans, policies, programs, or ordinances may be a basis for Consultant to submit an Amendment to this Agreement addressing the impact of the change.

(7) Reimbursable Expenses. All of Consultant's expenses for document copying, FAX, delivery, travel, services, equipment and facilities are charged to Client at Consultant's cost.

(8) Billing and Payment. Time is of the essence in payment of invoices. Consultant invoices for Work performed will be issued at the close of each calendar month and upon completion of the Work. Any comments or questions which Client has concerning the contents of an invoice or the Work represented by an invoice must be submitted to Consultant in writing within fifteen (15) days after Client receives the invoice. If no such comments or questions are received by Consultant, the Work represented and the invoice shall be considered correct and accepted by Client. If payment for an invoice is not received by Consultant within forty-five (45) days after the date of the invoice, a reasonable late charge will be applied to all amounts outstanding, commencing thirty (30) days after the date of the invoice and continuing monthly until all amounts have been paid in full.

(9) Suspension or Termination. Either party may suspend or terminate the Work at any time upon seven (7) days' written notice to the other party. Client shall pay all amounts due for the Work to the effective date of suspension or termination, plus all costs incurred by Consultant as a result of the termination or suspension.

(10) Client Files. When the Work is completed or this Agreement is terminated and Consultant has been paid in full, Consultant will, upon written request of Client, provide Client with all files reports and exhibits prepared by Consultant in performing the Work, except computer programs or data prepared by or for Consultant in connection with the Work. Reuse of any documents or other



deliverables, including electronic media, pertaining to the project by Client for any purpose other than that for which such documents or deliverables were originally prepared, or alteration of such documents or deliverables Consultant's written consent, shall be at Client's risk. Client shall indemnify and defend against, and hold harmless from, all claims, losses, liabilities, and expenses asserted against or incurred by Consultant arising out of or connected with any such unauthorized reuse or alteration. Unless instructed otherwise in writing it is Consultant's policy to destroy Clients' files five (5) years after the date of final billing for the Work.

(11) Limitation of Liability. Consultant shall be liable to Client only for losses incurred by Client which are directly caused by (a) the acts or omissions of Consultant, in violation of this Agreement, and (b) willful misconduct or gross negligence of Consultant. Consultant shall not be liable to Client for (a) delays caused by factors beyond the reasonable control of Consultant, or (b) consequential damages. Consultant's liability to Client shall be further limited to the amount available from Consultant's insurance, if any. Except for claims for indemnification, the time period for bringing claims under this agreement expires one year after Consultant issues its final invoice for the Work.

(12) Insurance Cooperation. Client may, at Client's expense, obtain insurance to protect it against any risk resulting from this Agreement or the Work, and Consultant will cooperate with Client in obtaining such insurance.

(13) Indemnity to Consultant. Client shall indemnify and defend against, and hold Consultant harmless from all claims, losses, liabilities and expenses asserted against Consultant by third parties or incurred by Consultant as a result of such third party assertions.

(14) Confidentiality. Consultant will take reasonable steps to protect the confidentiality of information obtained by Consultant in performing the Work, when Client advises Consultant in writing of the confidential nature of such information. Consultant may use Client's name in general descriptions of the Work and services performed by Consultant.

(15) Employee Solicitation. Neither Client nor Consultant shall offer to employ or employ any employee of the other during, and for a period of six (6) months after termination of this Agreement.

(16) Settlement of Disputes. The parties will attempt in good faith to resolve any controversy or dispute arising out of or relating to this Agreement promptly by negotiations. If any party reaches the conclusion that the controversy or dispute cannot be resolved by unassisted negotiations, such party may notify the Judicial Arbitration and Mediation Service ("JAMS"), 500 North State College Boulevard, Suite 600, Orange, California 92668, (714) 939-1300. JAMS will promptly designate a mediator who is independent and impartial, and JAMS' decision about the identity of the mediator will be final and binding. The parties agree to conduct at least eight (8) consecutive hours of mediated negotiations within thirty (30) days after the notice is sent. If the dispute is not resolved by negotiation or mediation within thirty (30) days after the first notice to JAMS is sent, then, upon notice by any party to the other affected parties and to JAMS, the controversy or dispute shall be submitted to a sole arbitrator who is independent and impartial, selected by JAMS, for binding arbitration in accordance with JAMS' Rules for Non-Administered Arbitration of Business Disputes. The parties agree that they will faithfully observe the terms of this paragraph and will abide by and perform any award rendered by the arbitrator. The award or judgment of the arbitrator shall be final and binding on all parties. No litigation or other proceeding may be instituted in any court for the purpose of adjudicating, interpreting or enforcing any of the rights or obligations relating to the subject matter of this Agreement or for the purpose of appealing any decision of an arbitrator, except a proceeding instituted for the sole purpose of having the award of judgment of an arbitrator entered and enforced.

(17) Miscellaneous Provisions.

(a) Amendment. This Agreement may be changed only by a written amendment signed by Client and Consultant.

(b) Interpretation of Agreement. This Agreement shall be interpreted to give effect to its fair meaning and shall be construed as though it was prepared by both parties. This Agreement contains the entire agreement of Client and Consultant, and all prior negotiations, documents, and discussions are superseded by this Agreement. The parties acknowledge there are no applicable representations, warranties, or terms which are not stated in this Agreement. The invalidity of any provision of this Agreement shall not affect the validity of any other provision of this Agreement. Section headings are for convenience and shall not be used in interpreting this Agreement.



(c) References. All references to this Agreement include reference to all amendments to this Agreement. All references to the Work include references to all or a part of the Work. References to Client or Consultant include, bind, and inure to the benefit of, their officers, agents, employees, successors in interest and assignees.

(d) Time and Excusable Delays. Reference to days in this Agreement means consecutive calendar days including weekends and holidays. The time for performance of an obligation, other than the payment of money, shall be extended for the period during which a party is prevented from performing by the act or omission of the other party, acts of God, government or other force or event beyond the reasonable control of such party.

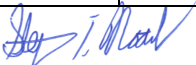
(e) Counterparts. This Agreement may be executed in multiple counterparts all of which shall be one and the same Agreement.

(f) Attorneys' Fees. If any action is commenced to enforce or interpret the terms of this Agreement, the prevailing party shall be entitled to reasonable attorneys' fees and expenses, in addition to other relief as the court may award.

(g) Prohibition of Assignment. No right or remedy under this Agreement may be assigned by any party. Any attempted assignment shall be void.

(h) Notices. All notices required or allowed shall be in writing and shall be sent to the addresses shown at the beginning of this Agreement. A party may change its address for notices and consents by giving notice to the other party. Notice may be delivered by personal delivery, facsimile transmission during normal business hours of the recipient, an overnight delivery service, or U.S. Mail sent certified with return receipt requested. Notices and consents are effective on the earlier of the date received, the date of the delivery receipt, or the date delivery is refused, as applicable.

CONSULTANT:

CONSULTANT	PlaceWorks, a California Corporation		
STREET ADDRESS	3 MacArthur Place, Suite 1100		
CITY STATE AND ZIP	Santa Ana, CA 92707		
AUTHORIZED REPRESENTATIVE	Steve Noack, AICP	TITLE	Principal
		5/18/18	
PlaceWorks' Authorized Representative		Date	

CLIENT:

CLIENT	Gilroy Unified School District		
PROJECT NO.	P2018-0521N		
STREET ADDRESS	7810 Arroyo Circle		
CITY STATE AND ZIP	Gilroy, CA 95020		
AUTHORIZED REPRESENTATIVE	James D. Bombaci	TITLE	Director of Facilities Planning and Management
Client's Authorized Representative		Date	

Hollister Moving and Storage

PO Box 1987 Hollister, CA 95024
Office: 831-637-6250 Fax: 831-636-5029
CAL PUC T-185633

On Site Move Price Estimate

Packing Date(s):

Loading Date(s): TBD

Delivery Date(s): TBD

ORIGIN		DESTINATION	
Name:	Gilroy Unified - Gavilan College - Mike Rice	Name:	Gilroy Unified - Gavilan College - Mike Rice
Address:	Gavilan College - GECA Buildings - 14 & 16	Address:	On site storage container & Buildings 14 & 16
City:	Gilroy, CA	City:	
Phone:		Phone:	
Email:		Email:	

MOVE DESCRIPTION

lbs.

Move of contents from building 16 into the storage container + move the contents from building 14 into building 16. The teachers/staff will pack most of the items. There will be some items left for our crew to pack based on the items noted during the walk through. At the end of the project the items will be moved back to the original buildings that they came from and the storage container will be removed.

LOCAL MOVE - Move out in end of June

Trucks

4 Movers

Load Hrs

Unload Hrs

Drive (x2)

Total Hours

Hourly

COST

\$ 2,120.00

Move back - August

\$ 2,120.00

DISTANCE MOVE:

Pounds

Minimum Weight

Miles

Rate/CWT

STORAGE:

20' Storage container = \$120.00 per month + Drop & Pickup = \$250.00 (2 months)

\$ 490.00

PACKING DESCRIPTION

man hours @\$60/hour

\$ -

Packing labor and carts needed are included in the rates above

PACKING MATERIALS AND TAX:

See attached for details - final charges based on actual use.

\$ 401.99

Amount	Deductible	Rate	Cost
			\$ -
			\$ -

\$ -

Fuel Charge

2%

\$ 84.80

Discounts:

\$ (400.00)

Past Customer Discount/Gilroy Unified = \$-300 + Packing Material Discount = \$-100

Total Discounts = \$-400.00

Payment Method:

Personal Check

TOTAL COST

\$ 4,816.79

South Valley's #1 Mover Since 1978

x600 Extra Time Storage
\$ 5,416.79

Hollister Moving and Storage

PO Box 1987 Hollister, CA 95024
Office: 831-637-6250 Fax: 831-636-5029
CAL PUC T-185633

Customer Name: Gilroy Unified - Gavilan College - Mike Rice

PACKING MATERIAL - CONTAINERS

Qty	Item	Rate	Total
75	1.5 Sm	\$ 2.50	\$ 187.50
40	3.0 Md	\$ 3.75	\$ 150.00
	4.5 Lg	\$ 5.95	\$ -
	5.0 DP	\$ 16.75	\$ -
	6.0 Ex L	\$ 12.50	\$ -
	6.6 Elec	\$ 15.00	\$ -
	8.0 CF		\$ -
	10.0 CF		\$ -
	Flat sm	\$ 10.00	\$ -
	Flat med	\$ 15.00	\$ -
	Flat Lg	\$ 18.00	\$ -
	TV Box	\$ 45.00	\$ -
	Flat 7x8	\$ 75.00	\$ -
	Crate		\$ -
	Wardrobe	\$ 12.80	\$ -
	S/D Matt	\$ 8.50	\$ -
	Q/K matt	\$ 16.00	\$ -
TOTAL			\$ 337.50

PACKING MATERIAL - OTHER

Qty	Item	Rate	Total
12	Tape, 2"	\$ 2.75	\$ 33.00
	Papir Pad		\$ -
	Bwrap 12"		\$ -
	Bwap 24"		\$ -
	Bwrap 48"		\$ -
	Pkg Ppr	\$ 24.95	\$ -
	Dp Inserts		\$ -
			\$ -
			\$ -
			\$ -
			\$ -

Other Materials Total	\$ 33.00
Containers Total	\$ 337.50
Sub Total All Materials	\$ 370.50
TAX 8.50%	\$ 31.49

TOTAL MATERIAL \$ 401.99

Important Notice

This Proposal covers only the articles and services listed. Actual charges for those services listed will not exceed the Estimated Cost. No guarantee can be made as to the specific dates of pickup or delivery unless you make special arrangements with the Mover, and those dates are included on this Proposal or Agreement.

TO BE COMPLETED BY MOVER:

Are maximum rates to be exceeded on this move? NO

If yes, by how much will charges exceed those of Maximum Rates? \$ N/A

TO BE COMPLETED BY CUSTOMER:

If maximum rates are to be exceeded, do you consent to the amount of the charge to be assessed over the Maximum Rates? N/A

MOVER and CUSTOMER SIGNATE BELOW ACKNOWLEDGE CONDITIONS OF PROPOSAL/ESTIMATE:

Moving Company

Date

Customer (or Agent)

Date

Hollister Moving and Storage

Item 2B.

PO Box 1987 Hollister, CA 95024
Office: 831-637-6250 Fax: 831-636-5029
CAL PUC T-185633

Customer Name: Gilroy Unified - Gavilan College - Mike Rice

BASIS OF CARRIER'S COST PROPOSAL

ORIGIN:

Flight of Stairs qty steps:
Landings qty:
Long Carry distance:
Packing:
Packing Material: partial
Shuttle:
Full Value Coverage
Additional Truck (s):
Extra Pickup:
Disassembly:
Regular Storage: On Site Container 20'
Boxes from Garage

Service Required	Service Not Req'd	Condition Unknown
	X	
	X	
X		
X		
X		
	X	
	X	
	X	
	X	
	X	
X		
	X	

DESTINATION:

Flight of Stairs qty steps:
Landings qty:
Long Carry distance:
Shuttle:
Unpacking:
Boxes to Garage:
Extra Delivery:

Service Required	Service Not Req'd	Condition Unknown
	X	
	X	
X		
	X	
	X	
	X	
	X	
	X	

Charges to be Paid by: **Personal Check**

I REQUEST ONLY THE SERVICES AND ITEMS LISTED ON THIS DOCUMENT TO BE CONSIDERED IN DETERMINING THE ESTIMATED COST. I UNDERSTAND THAT ADDITIONAL CHARGES WILL BE MADE FOR ANY ADDITIONAL SERVICES REQUESTED AT A LATER TIME.

I HAVE RECEIVED THE BOOKLET "IMPORTANT INFORMATION FOR PERSONS MOVING HOUSEHOLD GOODS".

Customer (or Agent)

Date

South Valley's #1 Mover Since 1978



43084 Rancho Way #D, Temecula, CA 92590
P 310-791-5601 | F 951-339-3642
www.MarathonFinishing.com

Estimate

Date	Estimate No.
3/6/2018	6881

Name/Address

Gilroy High School
Justin Zimmerman
750 W. 10th Street
Gilroy, CA 95020

Sales Rep		Project	
JF			
Description	Qty	Rate	Total
<p>This quote is for an Outdoor Rated "Heated" Reverse Air Flow spray booth. This booth will be placed outdoors, and will be a free standing unit.</p> <p>-----</p> <p>Marathon Outdoor Rated - Heated - Reverse Air Flow Spray Booth Package Model: ODRAF-140926-10L-P-OVH</p> <p>DESIGN: Booth is constructed with an integrated all weather cover and designed for outdoor use. Air enters at the rear of the booth via a Heated MUA through a box intake plenum, then air is exhausted through the front pant-leg exhaust filters. Lights are exterior mounted on clear tempered glass for maximum light output and include weather covers. A man access door is located on the side for personnel access. Hi-volume fan and motor are included. Spray booth is gable design for efficient air flow and lighting.</p> <p>SPECIFICATIONS: All panels constructed with 18 gauge galvanized steel with 2" pre punched (Nut & Bolt assembly) panel flanges on outside of unit. This booth has an integrated canopy and is ruggedly built to stand up to the outdoor environment.</p> <p>Inside Dimensions: 14' 0" Wide x 9' 0" x 26' 0" Long Outside Dimensions: 16' 0' Wide x 10' 0" High x 29' 2" Long Note: Final Dimensions may change slightly due to engineering considerations.</p> <p>DOORS: Main Product Doors: (1 set) 9' Wide x 8' 0" High opening, dual skin with windows. Man Access Doors: (1) 3' Wide x 7' Tall, dual skin with glass observation window.</p>	1	28,195.00	28,195.00T
All Quotes are Valid for 30 Days!		Total	

Comment: If you have any questions regarding this estimate please contact me at:
800-919-9035 X103 | John.F@MarathonFinishing.com
Thank you, John Falcone



43084 Rancho Way #D, Temecula, CA 92590
 P 310-791-5601 | F 951-339-3642
 www.MarathonFinishing.com

Estimate

Date	Estimate No.
3/6/2018	6881

Name/Address

Gilroy High School
 Justin Zimmerman
 750 W. 10th Street
 Gilroy, CA 95020

Sales Rep		Project		
JF				
Description	Qty	Rate	Total	
EXHAUST: Exhaust Fan: (1) 34" dia. Tube-axial fans Exhaust Motor: (1) 5 H.P., 208/240v 3-Phase Exhaust Filters: 20" x 20" x 2" Paint Arrestor Filters with Wire Grid (standard size) Exhaust duct kit - outdoor: (1) 34" round Operational CFM: 12,200 @ 100 FPM Fan Capabilities: 17,150 @ 1/2" Static Pressure LIGHTING: Light Fixtures: (10) 4-Tube, T-8, 120V Electronic Ballast, open type. with light weather covers and gasket (Bulbs not included). Also Includes: Caulking, Assembly Screws, Manometer, Assembly Manual. -----				
		Total		

All Quotes are Valid for 30 Days!

Comment: If you have any questions regarding this estimate please contact me at:
 800-919-9035 X103 | John.F@MarathonFinishing.com
 Thank you, John Falcone



43084 Rancho Way #D, Temecula, CA 92590
P 310-791-5601 | F 951-339-3642
www.MarathonFinishing.com

Estimate

Date	Estimate No.
3/6/2018	6881

Name/Address

Gilroy High School
Justin Zimmerman
750 W. 10th Street
Gilroy, CA 95020

Sales Rep		Project	
JF			
Description	Qty	Rate	Total
1.2MM BTU "Spray/Cure" Heater - Placed on a cement pad, outside your building, behind the booth intake plenum. Vertical configuration, with side discharge. 80 Degree Temperature Rise.	1	16,250.00	16,250.00T
Unit includes:			
• Heavy Duty Base Cabinet			
• High-Low Volume Air Return			
• STD/ETL Gas Manifold (Propane)			
• Cast Aluminum Direct Gas Fired Burner with SS Mixing Plates			
• 2" Permanent Aluminum Intake Filters			
• Heavy Duty Fan with 7.5 H.P. Premium Efficiency O.D.P. Motor, providing 12,200 CFM			
• Spray/Cure Digital Control Panel			
• Transformer & Fusing for Spray Gun Solenoid			
• Flame controller interlock status indicator lights (5 LEDs)			
• Exhaust Fan VFD - 5 H.P.			
• Digital pressure gauge to AUTOBALANCE the booth			
• Outdoor Disconnect			
Intake Duct Package for heater being mounted 4' behind spray booth.	1	348.75	348.75T
30" x 30" Square Duct - 4' Section	1	193.75	193.75T
Intake Air Diffuser			
Electrical Controls Package for 3 Phase Power Supply - (208/240V)			
Non Fused Disconnect 30A, 208/240v, 2hp-7.5hp, 1ph, Nema3r	1	186.00	186.00T
Solenoid Valve & Coil, 1/2"	1	131.75	131.75T
Hazardous Location Door Switch shuts off air-line/fan in booth when doors are open -2 doors	1	333.25	333.25T
Total			

All Quotes are Valid for 30 Days!

Comment: If you have any questions regarding this estimate please contact me at:
800-919-9035 X103 | John.F@MarathonFinishing.com
Thank you, John Falcone

Estimate

Date	Estimate No.
3/6/2018	6881

Name/Address

Gilroy High School
Justin Zimmerman
750 W. 10th Street
Gilroy, CA 95020

	Sales Rep		Project	
	JF			
Description	Qty	Rate	Total	
Electrical Package 3 Phase, Heated			651.00	
----- ENGINEERING: For Booth Model #ODRAF-140926-10L-P-OVH Full Engineering Package with Stamp from a California Engineer **Please note that this package does not include the price for any booth modifications that may be required to meet local building codes above and beyond 30 lbs/ square foot snow load and 100mph wind load.** -----	1	3,750.00	3,750.00	
T-8 Light Bulbs (30 Per Box) Daylight Color Corrected Light Output: 3,050 Lumens, Color Temp: 5,000 Kelvin, CRI 86 -----	2	107.74	215.48T	
Delivery Charge to: 750 W. 10th Street Gilroy, CA 95020 -----	1	1,995.00	1,995.00	
Permit Processing Package -All permit processing paperwork submitted and picked up. -Scheduling final inspections -On site for inspections -----	1	5,200.00	5,200.00	
All Quotes are Valid for 30 Days!		Total		

Comment: If you have any questions regarding this estimate please contact me at:
800-919-9035 X103 | John.F@MarathonFinishing.com
Thank you, John Falcone



Item 3A.

Estimate

43084 Rancho Way #D, Temecula, CA 92590
P 310-791-5601 | F 951-339-3642
www.MarathonFinishing.com

Date	Estimate No.
3/6/2018	6881

Name/Address

Gilroy High School
Justin Zimmerman
750 W. 10th Street
Gilroy, CA 95020

Description	Sales Rep		Project	
	JF			
	Qty	Rate	Total	
Mechanical and Electrical Assembly of: - Spray Booth - Exhaust Duct Run - Heater - Heater Duct Runs. - Wire system per N.E.C. Also included is Start Up, Balancing, and Training on Spray Booth. Not Included: Forklift and Man Lifts for install, provided/arranged by customer. Concrete Slab Main Power landing, gas line connection, and air line connection by owner supplied contractor. *See Our Terms Of Installation*.	1	13,320.00	13,320.00	
Dry Chemical Fire Suppression Package - Code compliant design of system - Includes all equipment and hardware for the designed system - Installed with permits	1	9,000.00	9,000.00	
PAYMENT TERMS: 50% Down 40% Due 5 Days Prior to Shipping 10% Due Upon Completion of Install				
Sales Tax		9.00%	4,126.86	
Total			\$83,245.84	

All Quotes are Valid for 30 Days!

Comment: If you have any questions regarding this estimate please contact me at:
800-919-9035 X103 | John.F@MarathonFinishing.com
Thank you, John Falcone



Marathon Finishing Systems, Inc

43084 Rancho Way #D

Temecula, CA 92590

Ph: 800-919-9035 Fax: 951-339-3642

Facility Specification Confirmation

Roof Height: _____

Roof Construction: Wood Metal

Pitched: No Yes: 1/12 2/12 3/12 4/12

Your equipment requires both Industrial and Standard power to be operational. Please indicate below the specifications for the two power supplies you will be using for the equipment (please note that you will need both Industrial and Standard):

Confirm Voltage (Industrial - Motors/AMU): 1 Phase: 120V or 230V

3 Phase: 208V or 240V or 460V

Confirm Voltage (Standard - Lights & misc.) 1 Phase: 120V or 277V

Heater: Natural Gas Propane

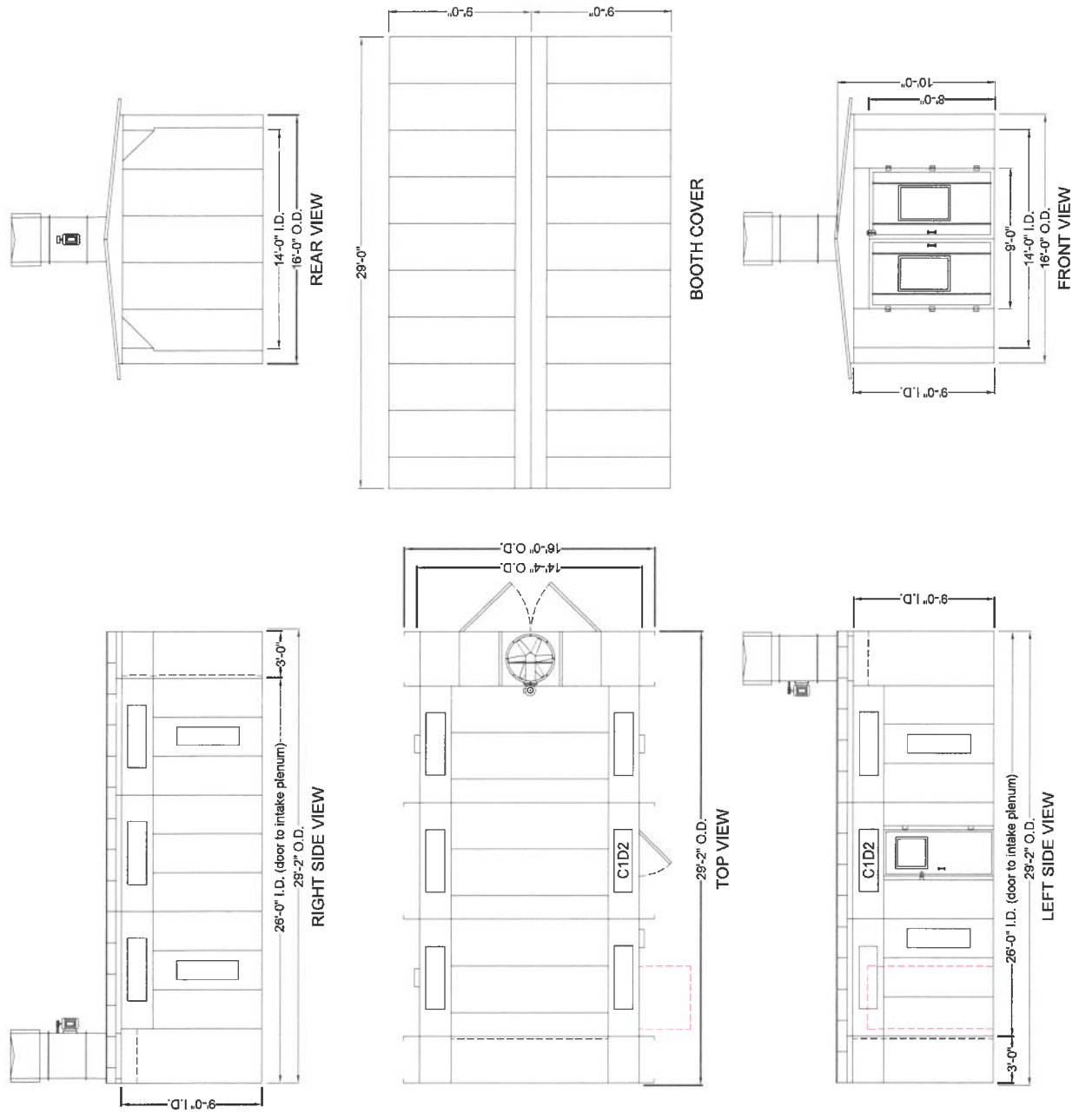
*This confirms that all information needed to begin manufacturing of all ordered equipment has been verified and confirmed by the customer. Marathon will not be held responsible for any cost for any change orders. Any cost incurred due to a change in order will be solely the responsibility of the customer.

Print Name _____

Signature _____

Date _____

1		SHEET	
DRAWN BY:		BOOTH IS MANUFACTURED IN ACCORDANCE WITH THE FOLLOWING CODES AND GUIDELINES: NFPA 33, NEC §16, UFC 15 AND OSHA GUIDELINES.	
SCALE:		APPROVED BY:	
DATE:		Temeclula, Ca 92590	
REV		P 1.800.919.9035	
5-2-18		Marathon Finishing Systems	
1		WWW.MarathonFinishing.com	
DESCRIPTION		Add one C1D2 light; add product door observation windows.	



MARATHON FINISHING SYSTEMS

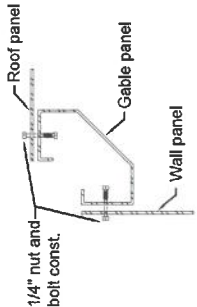
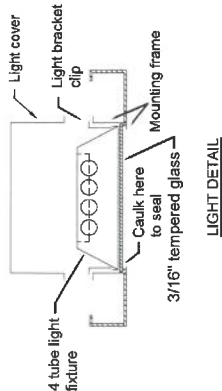
DRAWING INTENDED FOR CUSTOMER APPROVAL.
MANUFACTURING WILL NOT BE COMPLETED UNTIL
SIGNED DRAWING IS RETURNED.

APPROVED BY: _____ DATE: _____
VOLTAGE: _____ PHASE: _____ LEFT: _____ RIGHT: _____
MAN DOOR SWING: _____
CUSTOMER: _____

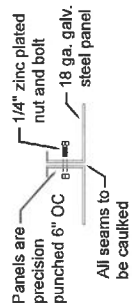
Mechanical:
Fan - 34" tubeaxial with aluminum spark proof blade, CFM = 21,405 @ 1/8" S.P.
Manometer - Dwyer Model 25 air filter gauge.
Door Latches - Pressure activated.

Electrical:
Lights - Enclosed 4 tube - 4' fluorescent fixtures with energy efficient ballast, mounter on 3/16" glass. (Qty. 10)
Motor - 5hp 3ph 208-230/460V O.D.P. 1745 R.P.M.

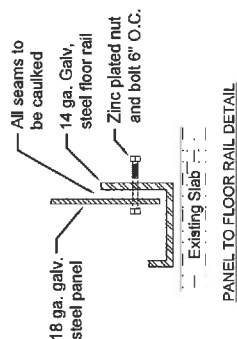
Construction:
Panels - 18 Ga. galvanized steel precision punched @ 6" O.C. (fastened with 1/4" nuts & bolts).
Floor Rails - 14 Ga. galvanized steel precision punched @ 6" O.C. (fastened with 1/4" nuts & bolts).
Access Door - Double wall 18 Ga. galvanized steel 36" wide x 84" high.
Product Door - Double wall 18 Ga. galvanized steel 107" wide x 96" high with 2' x 3' windows.



GABLE TO WALL AND ROOF DETAIL

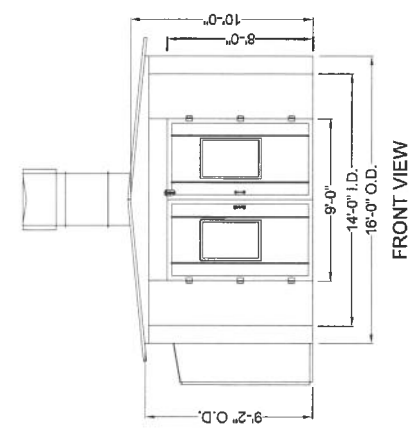
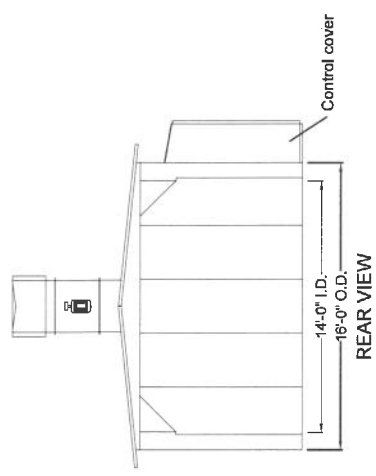


PANEL TO PANEL DETAIL



PANEL TO FLOOR RAIL DETAIL

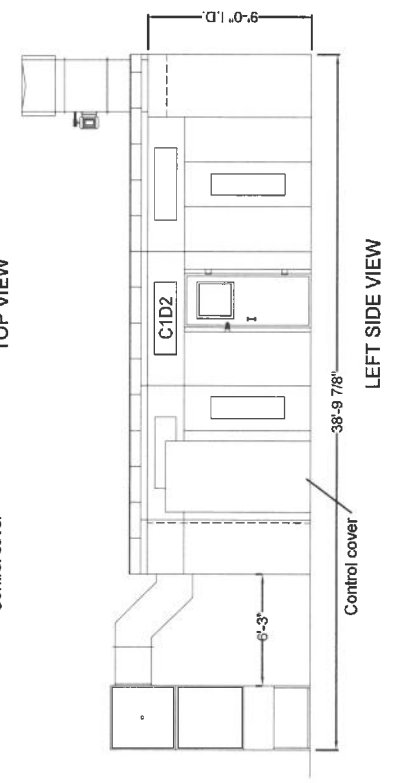
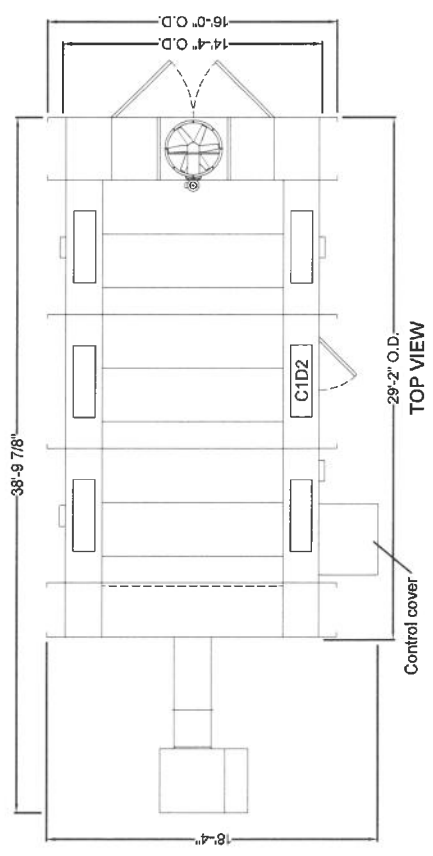
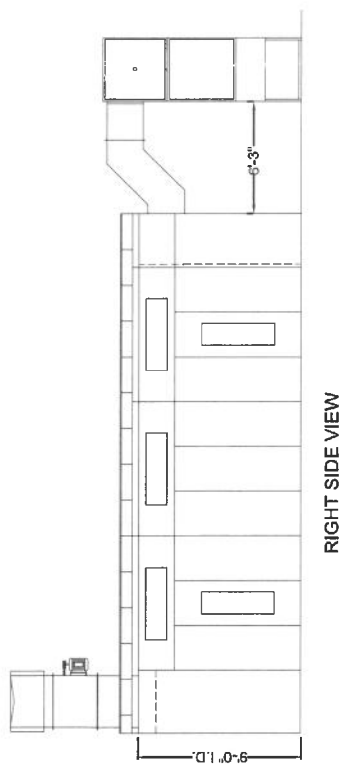
2		SHEET	
DRAWN BY:		AUTO SPRAY BOOTH	
BOOTH IS MANUFACTURED IN ACCORDANCE WITH THE FOLLOWING CODES AND GUIDELINES: NFPA 33, NEC 516, UFC 15 AND OSHA GUIDELINES.		ODRAFT-140926-10L-P-OVH	
SCALE:	DATE:	APPROVED BY:	
Marathon Finishing Systems		Temecula, Ca 92590	
P 1.800.919.9035		WWW.MarathonFinishing.com	
REV	DATE	DESCRIPTION	
1	5-2-18	Add one C1D2 light; add product door observation windows.	



MARATHON FINISHING SYSTEMS

DRAWING INTENDED FOR CUSTOMER APPROVAL.
MANUFACTURING WILL NOT BE COMPLETED UNTIL
SIGNED DRAWING IS RETURNED.

APPROVED BY: _____ PHASE: _____ DATE: _____
VOLTAGE: _____ LEFT: _____ RIGHT: _____
MAN DOOR SWING: _____
CUSTOMER: _____



QUOTE



Item 3B.

Corporate Office
1555 Tahoe Court
Redding, CA 96003
Tax ID#: 72-1545106

Main#: (877) 473-7619
Fax#: (530) 246-0518

QUOTE TO:

Gilroy Unified School District
Dan McAuliffe
7810 Arroyo Circle
Gilroy, CA 95020

DATE: 4/30/2018

QUOTE #: Q18-1894

REP: Spencer - spencer@nsp3.com

Main #: 408-842-8297

PROJECT: Luigi ES - Fabric Replacement

Email: dan.mcauliffe@gilroyunified.org

TERMS: Net 30 from Shipment

QTY	VENDOR	MODEL#	DESCRIPTION	RATE	TOTAL
8	Custom Canopies	CC - Fabric	CA Fire Marshal Approved Fabric - Fireblock Replacement Fabric Size: 20'x19'8" Confirm Fabric dimensions & connections prior to order	1,262.00	10,096.00T
		CCF	Custom Canopies Freight	200.00	200.00
		Install PA	Installation by Park Associates Inc. CA - Lic# 959805 DIR# 1000003741 Remove & Replace (8) Fabric shade canopies @ Luigi ES Prevailing Wage *Additional fees may apply if Bonding or Special Insurance required* By signing below you acknowledge and agree to our Contract; Exclusions, Conditions & Payment Terms, which are to be included in, and supersede any additional contracts or sub-contract agreements made separately based on this "Estimate". Unless otherwise specified above we Exclude Responsibility for: material delivery &/or off-loading equipment, storing of equipment, removal of packaging accumulated by equipment supplied by others, project security, landscape & hardscape repair based on access route to site, delays or returns due to layout conflicts, missing or damaged components & hardware, locating underground utilities; utilities, pipes, obstructions in work area, conditions unforeseen and/or not disclosed at time of estimate, permits, engineering, material testing, soil samples. Conditions: Grades; stable, compacted, & workable (rough grade to be taken + or - one tenth of one inch), adequate access to work site provided for workmen, materials, tools & equipment. Payment Terms: Material balance due on delivery/installation balance due upon completion of installation.	7,384.00	7,384.00
QUOTE GOOD FOR 30 DAYS				SUBTOTAL	\$17,680.00
				SALES TAX (8.5%)	\$858.16
				TOTAL	\$18,538.16

Representative Authorized to Order: _____

Date: _____

SIGNED QUOTE REQUIRED TO ORDER

ORDER/DELIVERY INFORMATION: (Unless otherwise specified)

Offloading and installation are customer's responsibility. Please consult your sales representative for shipping and delivery time line. Time line will depend on equipment ordered. Please schedule delivery time with commercial freight company. NSP3 will provide name and phone number of freight company.

Work Order ID: 13476

Completion Date: 4.2.18

Description	Please measure the canvas lunch canopies at the Luigi lunch shelter for replacements. Diagram is attached to work order hard copy in your box. Please take pictures of the canopy....all 8 will be replaced.		
Location	Luigi Aprea Elementary	Building	Grounds
Area		Priority	Medium
Area Number		Craft	
Category		Type	
Status	Work In Progress	Estimated Hour	0.00
Assigned To	Ciraulo, Gary	Requester	Dan McAuliffe 408-710-8480
Estimated Start	3/16/2018	Request Date	3/16/2018
Est. Completion Date		Req. Completion Date	
Budget Code		Purpose Code	Reactive Maintenance
Project Code		Project Description	
Equip Item No.		Equip Desc	
Notes			

Purchases						To Date:	\$0.00
Date	Inv/Ref	Description	Supplier	Pool	Qty	Cost Each	

Labor			To Date:	h
Date	Name	Hours		
4.2.18	GARY & THOMAS	1.0		

MEASURE TOPS.

INFO ATTACHED


Technician Name
www.schoolde.com MaintenanceDirect

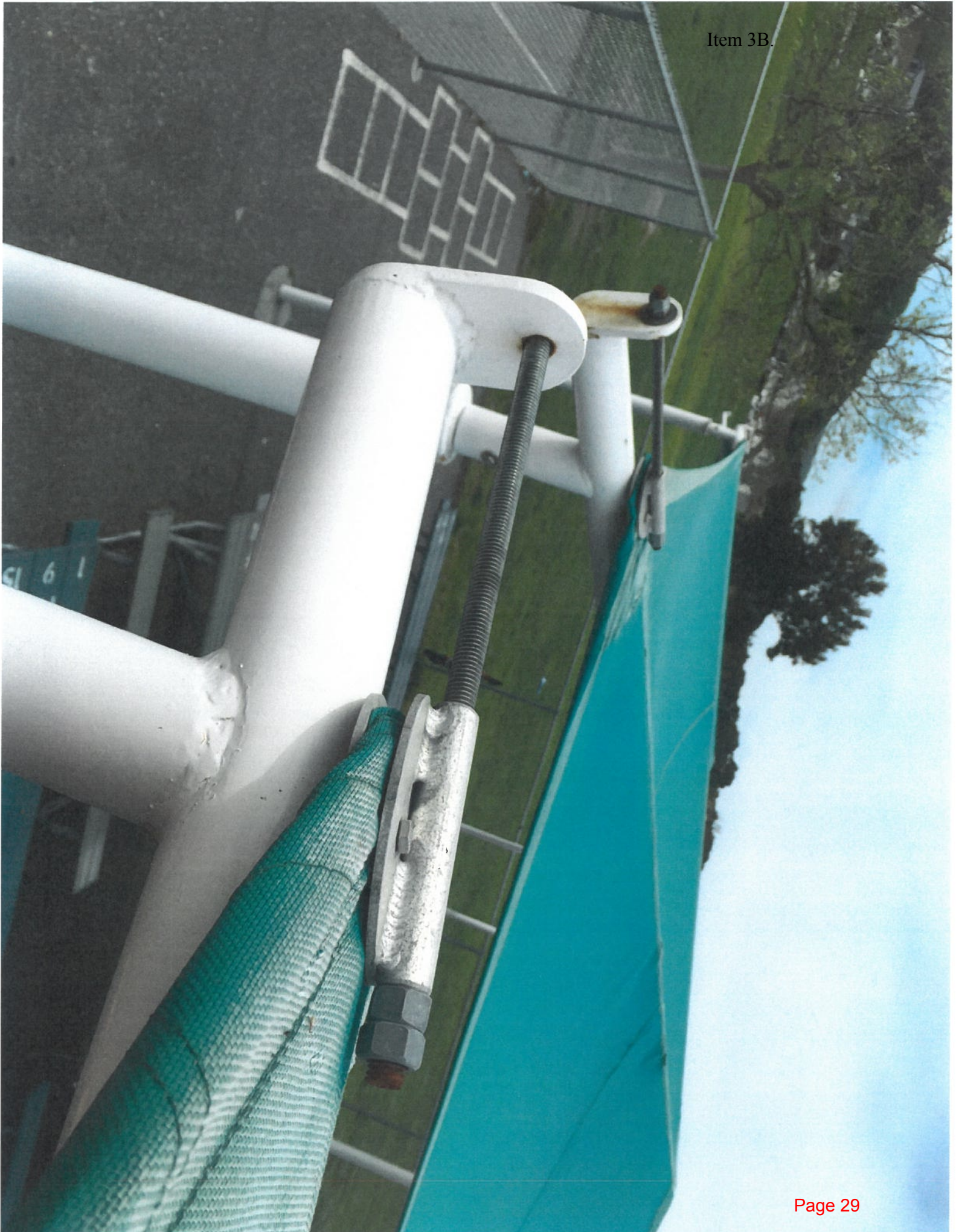
4.2.18
Date

Confirmation

RECEIVED
APR 12 2018
Date

Printed by Dan McAuliffe
Page 27







Item 3B.



You have received this Quote per your request from Belson Outdoors (belson.com).
 If you are having trouble reading this email? [View it in your browser](#) or go to
<https://www.belson.com/Secure/Request.aspx?OrderID=216634&Key=4012.3495889416>

Quote #
WQ 216634

Here is the Quote as per your request. The 'Shipping' total has been applied.
 To place an order, simply click 'Submit Order Confirmation' below.
 Please print this page for your records.
 Customer Order Confirmation is required to process order.



111 North River Road
 North Aurora, IL. 60542
 sales@belson.com

Toll Free: 1-800-323-5664
 Phone: 1-630-897-8489
 Fax: 1-630-897-0573

QUOTE #
WQ 216634

Model #	Description	Lbs	Quantity	Unit Price	Unit Total
238-V8	8' Extra Heavy Duty Table, Diamond Choose Top/Seats Color Choose Frame Color Discount Applied	215	23	\$701.00	\$16,123.00
		Subtotal	4,945	Subtotal	\$16,123.00
					(Illinois Only) Tax \$0.00
					Shipping \$1,683.73
					Grand Total \$17,806.73

Customer Order Confirmation is required to process order.

Your Order will not be shipped without your "Order Confirmation"

First Name* Leeanna

Last Name* Hammer

Company Gilroy Unified School District

Address* 7810 Arroyo Circle

Address

City* Gilroy

State* CA

Zip Code* 95020

Country

Phone* 669-205-4076

Fax

Email leeanna.hammer@gilroyunified.org

First Name Leeanna

Last Name Hammer

Company Gilroy Unified School District

Address* 7810 Arroyo Circle

Address Rod Kelley -

City* Gilroy

State* CA

Zip Code* 95020

Country

Phone 669-205-4076

Fax

Email leeanna.hammer@gilroyunified.org

✓ Phone Call 24 Hours Prior to Delivery

✓ Delivery to Residential or Non-Commercial Truck Route Addresses

Power Liftgate Service - Driver will lower shipment from the truck to the ground (Only)







Order Power Liftgate Service if — You will be unable to unload the shipment from the truck.

Does Not apply to UPS shipments

Order Confirmation

NW-E Rod Kelly (1 of 4 quotes)

View Order Confirmation Details

 Visa  MasterCard  American Express  Discover  Check with Order  On Account

Customer Confirmation Is Required to Complete Order

* Email Order Confirmation leeanna.hammer@gilroyunified.org

Fax Order Confirmation

Customer Service Representative Call (M-F 8:00am - 4:30pm CST)

What is the best day and time to call?

Contact Name (If Different than 'Sold To') Phone

[Submit Order Confirmation](#) [Cancel Order](#)

You have received this Quote per your request from Belson Outdoors (belson.com).
 If you are having trouble reading this email? [View it in your browser](#) or go to
<https://www.belson.com/Secure/Request.aspx?OrderID=216635&Key=4012.35045782088>

Quote #
WQ 216635

Here is the Quote as per your request. The 'Shipping' total has been applied.
 To place an order, simply click 'Submit Order Confirmation' below.
 Please print this page for your records.
 Customer Order Confirmation is **required** to process order.



111 North River Road
 North Aurora, IL. 60542
sales@belson.com

Toll Free: 1-800-323-5664
 Phone: 1-630-897-8489
 Fax: 1-630-897-0573

QUOTE #
WQ 216635

Model #	Description	Lbs	Quantity	Unit Price	Unit Total
238-V8	8' Extra Heavy Duty Table, Diamond Choose Top/Seats Color Choose Frame Color Discount Applied	215.	27	\$701.00	\$18,927.00
		Subtotal:	5,805	Subtotal	\$18,927.00
					(Illinois Only) Tax \$0.00
					Shipping \$1,942.39
					Grand Total \$20,869.39

Customer Order Confirmation is required to process order.

Your Order will not be shipped without your "Order Confirmation"

First Name* Leeanna

Last Name* Hammer

Company Gilroy Unified School District

Address* 7810 Arroyo Circle

Address

City* Gilroy

State* CA

Zip Code* 95020

Country

Phone* 669-205-4076

Fax

Email leeanna.hammer@gilroyunified.org

First Name Leeanna

Last Name Hammer

Company Gilroy Unified School District

Address* 7810 Arroyo Circle

Address Luigi

City* Gilroy

State* CA

Zip Code* 95020

Country

Phone 669-205-4076

Fax

Email leeanna.hammer@gilroyunified.org

✓ Phone Call 24 Hours Prior to Delivery

✓ Delivery to Residential or Non-Commercial Truck Route Addresses

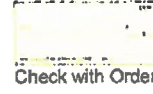
Power Liftgate Service - Driver will lower shipment from the truck to the ground (Only)

Order Power Liftgate Service if — You will be unable to unload the shipment from the truck.

♦ Does Not apply to UPS shipments

NW-E GIL253

Payment Method



Customer Confirmation is Required to Complete Order

- Email Order Confirmation leeanna.hammer@gilroyunified.org

Fax Order Confirmation

Customer Service Representative Call (M-F 8:00am - 4:30pm CST)

What is the best day and time to call?

Contact Name (If Different than 'Sold To')

Phone

[Submit Order Confirmation](#)

[Cancel Order](#)

You have received this Quote per your request from Belson Outdoors (belson.com).
 If you are having trouble reading this email? [View it in your browser](#) or go to
<https://www.belson.com/Secure/Request.aspx?OrderID=216636&Key=4012.35124680324>

Quote #
WQ 216636

Here is the Quote as per your request. The 'Shipping' total has been applied.
 To place an order, simply click 'Submit Order Confirmation' below.
 Please print this page for your records.
 Customer Order Confirmation is required to process order.



111 North River Road
 North Aurora, IL. 60542
sales@belson.com

Toll Free: 1-800-323-5664
 Phone: 1-630-897-8489
 Fax: 1-630-897-0573

QUOTE #
WQ 216636

Model #	Description	Lbs	Quantity	Unit Price	Unit Total
238-V8	8' Extra Heavy Duty Table, Diamond Choose Top/Seats Color Choose Frame Color Discount Applied	215	30	\$701.00	\$21,030.00
		Subtotal	6,450	Subtotal	\$21,030.00

(Illinois Only) Tax \$0.00:

Customer Order Confirmation is required to process order.

Shipping \$2,149.64

Your Order will not be shipped without your "Order Confirmation"

Grand Total \$23,179.64

First Name* Leeanna

First Name Leeanna

Last Name* Hammer

Last Name Hammer

Company Gilroy Unified School District

Company Gilroy Unified School District

Address* 7810 Arroyo Circle

Address* 7810 Arroyo Circle

Address

Address EL Roble

City* Gilroy

City* Gilroy

State* CA

State* CA

Zip Code* 95020

Zip Code* 95020

Country

Country

Phone* 669-205-4076

Phone 669-205-4076

Fax

Fax

Email leeanna.hammer@gilroyunified.org

Email leeanna.hammer@gilroyunified.org

✓ Phone Call 24 Hours Prior to Delivery

✓ Delivery to Residential or Non-Commercial Truck Route Addresses

1 Power Liftgate Service - Driver will lower shipment from the truck to the ground (Only)

Order Power Liftgate Service if — You will be unable to unload the shipment from the truck.

Does Not apply to UPS shipments

NW-E (3 OF 4 QUOTES) GIL253

Payment Method



Payment Method

Customer Confirmation is Required to Complete Order

Email Order Confirmation leeanna.hammer@gilroyunified.org

Fax Order Confirmation

Customer Service Representative Call (M-F 8:00am - 4:30pm CST)

What is the best day and time to call?

Contact Name (If Different than 'Sold To')

Phone

[Submit Order Confirmation](#)

[Cancel Order](#)

You have received this Quote per your request from Belson Outdoors (belson.com).
 If you are having trouble reading this email? [View it in your browser](#) or go to
<https://www.belson.com/Secure/Request.aspx?OrderID=216637&Key=4012.35209570833>

Quote #
WQ 216637

Here is the Quote as per your request. The 'Shipping' total has been applied.
 To place an order, simply click 'Submit Order Confirmation' below.
 Please print this page for your records.
 Customer Order Confirmation is required to process order.



111 North River Road
 North Aurora, IL. 60542
 sales@belson.com

Toll Free: 1-800-323-5664
 Phone: 1-630-897-8489
 Fax: 1-630-897-0573

QUOTE #
WQ 216637

Model #	Description	Lbs	Quantity	Unit Price	Unit Total
238-V8	8' Extra Heavy Duty Table, Diamond Choose Top/Seats Color Choose Frame Color Discount Applied	215	28	\$701.00	\$19,628.00
Subtotal: 6,020				Subtotal	\$19,628.00
				(Illinois Only) Tax	\$0.00
Customer Order Confirmation is required to process order.				Shipping	\$2,011.45
Your Order will not be shipped without your "Order Confirmation"				Grand Total	\$21,639.45

First Name* Leeanna

First Name Leeanna

Last Name* Hammer

Last Name Hammer

Company Gilroy Unified School District

Company Gilroy Unified School District

Address* 7810 Arroyo Circle

Address* 7810 Arroyo Circle

Address

Address Glen View

City* Gilroy

City* Gilroy

State* CA

State* CA

Zip Code* 95020

Zip Code* 95020

Country

Country

Phone* 669-205-4076

Phone 669-205-4076

Fax

Fax

Email leeanna.hammer@gilroyunified.org

Email leeanna.hammer@gilroyunified.org

✓ Phone Call 24 Hours Prior to Delivery

✓ Delivery to Residential or Non-Commercial Truck Route Addresses

Power Liftgate Service - Driver will lower shipment from the truck to the ground (Only)

Order Power Liftgate Service if — You will be unable to unload the shipment from the truck.

Does Not apply to UPS shipments

Special Instructions

NW-E (4 OF 4 QUOTES) GIL253

Accepted Payment Methods



Order Confirmation Method

Customer Confirmation is Required to Complete Order

- Email Order Confirmation leeanna.hammer@gilroyunified.org

Fax Order Confirmation

Customer Service Representative Call (M-F 8:00am - 4:30pm CST)

What is the best day and time to call?

Contact Name (If Different than 'Sold To')

Phone

[Submit Order Confirmation](#)

[Cancel Order](#)



Dan McAuliffe <dan.mcauliffe@gilroyunified.org>

Beautification Campaign Purchases--Fwd: Belson Outdoors- WQ223739

Cati Rupert <cmrupert@gmail.com>

Wed, Apr 25, 2018 at 2:38 PM

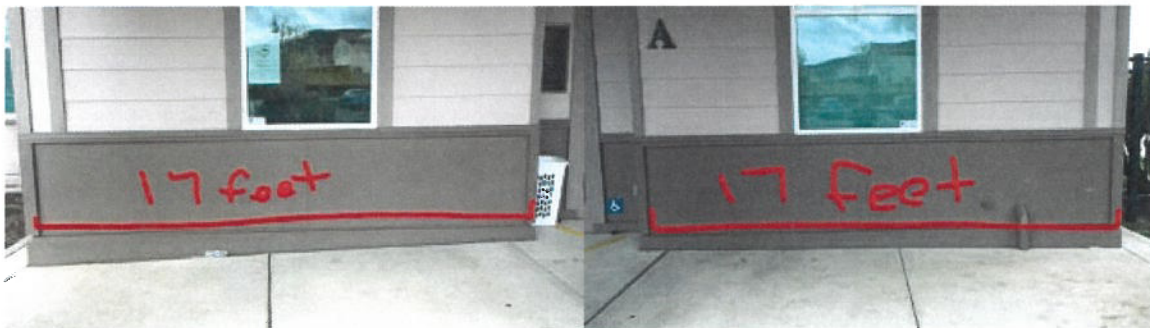
To: Silvia Reyes <Silvia.Reyes@gilroyunified.org>, dan.mcauliffe@gilroyunified.org

Cc: Melba Hernandez <hernandezmelie@yahoo.com>, Alma Sanchez <almaaparicio2015@yahoo.com>, Sandra Vargas <vargass2740@gmail.com>, Lucy Herrera <herdoza@yahoo.com>, Lucy Kestermont <lucy.kestermont@gilroyunified.org>, Antonieta Soza <tonieusoza@yahoo.com>

Ms. Reyes and Mr. McAuliffe,

For your perusal, please find below the invoice from Belson Outdoor that contain items that we're considering to purchase in support of our beautification campaign at Las Animas Elementary School.

NOTE: We've done some research and took pictures to show the space in front of the school for the 15 feet benches.



We appreciate your time and supporting our families.

Sincerely,

Catalina Madrigal Rupert
972-998-7343

Begin forwarded message:

From: Belson Outdoors - Marijane <Marijane.Pattison@belson.com>

Subject: Belson Outdoors- WQ223739

Date: April 25, 2018 at 7:21:38 AM PDT

To: "cmrupert@gmail.com" <cmrupert@gmail.com>

<https://www.belson.com/secure/request.aspx?OrderID=223739&Key=4072.92589108716>

Hello ,

Thank you for your interest in Belson Outdoors products. Please click on the link above to be directed to your quote.

These items have a production lead time of: **5-6 weeks**

If you have any questions or need anything else please do not hesitate to contact us.

You have received this Quote per your request from Belson Outdoors (belson.com).
 If you are having trouble reading this email? [View it in your browser](#) or go to
<https://www.belson.com/Secure/Request.aspx?OrderID=223739&Key=4072.92589108716>

Quote #
WQ 223739

Here is the Quote as per your request. The 'Shipping' total has been applied.
 To place an order, simply click 'Submit Order Confirmation' below.
 Please print this page for your records.
 Customer Order Confirmation is **required** to process order.



627 Amersale Drive
 Naperville, IL. 60563
 sales@belson.com

Toll Free: 1-800-323-5664
 Phone: 1-630-897-8489
 Fax: 1-630-897-0573

QUOTE #
WQ 223739

Model #	Description	Lbs	Quantity	Unit Price	Unit Total
CVR-238	Cover Plate For Surface And In-ground Mounts, Fits 2-3/8" Pipe Choose Color	1	8	\$24.00	\$192.00
358-RDV	46" Round Table, Diamond Choose Top/Seats Color Choose Frame Color	186	1	\$872.00	\$872.00
942SM-V15	15' Backless Park Bench, 2" x 12" Planks, Surface Mount, Diamond Choose Seat Color Choose Frame Color	137	2	\$533.00	\$1,066.00
CVR-238	Cover Plate For Surface And In-ground Mounts, Fits 2-3/8" Pipe Choose Color	1	8	\$24.00	\$192.00
940P-P6-LL	6' Bench With Back, 2" x 12" Planks, Portable, Perforated, Standard Laser Letter Custom Back Choose Seat Back Color Choose Seat Color Choose Frame Color	109	1	\$529.00	\$529.00
STM-9	8' Octagon Valance Fiberglass Umbrella Choose Umbrella Color Choose Pole Length/Color	125	1	\$1,100.00	\$1,100.00
942SM-V10	10' Backless Park Bench, 2" x 12" Planks, Surface Mount, Diamond	98	1	\$426.00	\$426.00

Subtotal 808 **Subtotal** \$4,377.00

☐ (Illinois Only) Tax \$0.00

Customer Order Confirmation is required to process order.

Your Order will not be shipped without your "Order Confirmation"

Shipping \$1,675.73

Grand Total \$6,052.73

Bill To:

Ship To:

First Name* Catalina

First Name Catalina

Last Name* Rupert

Last Name Rupert

Company La Animas Elementary School

Company La Animas Elementary School

Address* 6550 Cimino Street

Address* 6550 Cimino Street

Address

Address

City* Gilroy
 State* CA
 Zip Code* 95020
 Country
 Phone* 972-998-7343
 Fax
 Email cmrupert@gmail.com

City* Gilroy
 State* CA
 Zip Code* 95020
 Country
 Phone 972-998-7343
 Fax
 Email cmrupert@gmail.com

Additional Delivery Services

- ☒ Phone Call 24 Hours Prior to Delivery◇
- ☒ Delivery to Residential or Non-Commercial Truck Route Addresses
- ☒ Power Liftgate Service◇ - Driver will lower shipment from the truck to the ground (Only)

Order Power Liftgate Service if — You will be unable to unload the shipment from the truck.

◇ Does Not apply to UPS shipments

Special Instructions

MJ-p

Intended Payment Method



Visa

☐

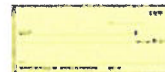

MasterCard

☐


American Express

☐


Discover

☐


Check with Order

☐


On Account

☐

Order Confirmation Method — Customer Confirmation is Required to Complete Order

- ☒ Email Order Confirmation cmrupert@gmail.com
- ☐ Fax Order Confirmation
- ☐ Customer Service Representative Call (M-F 8:00am - 4:30pm CST)

What is the best day and time to call?

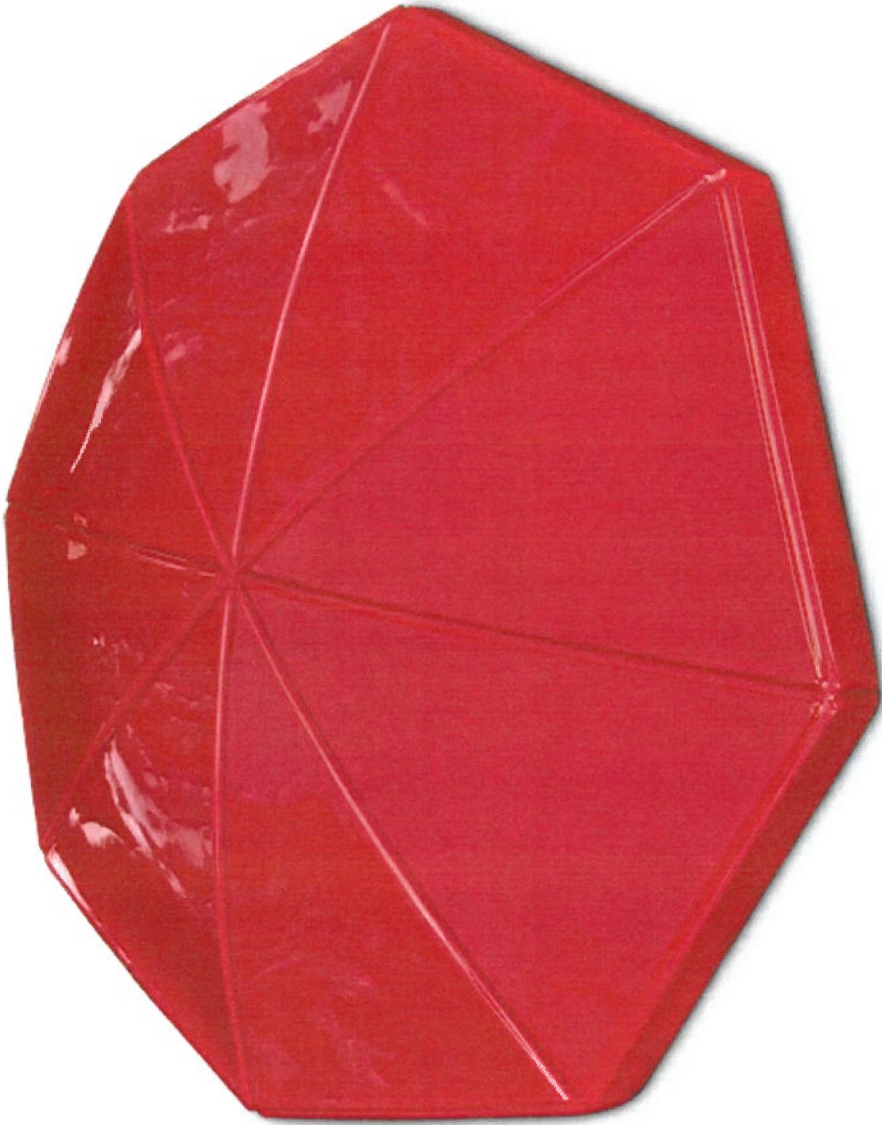
Contact Name (If Different than 'Sold To')

Phone

Submit Order Confirmation

Cancel Order

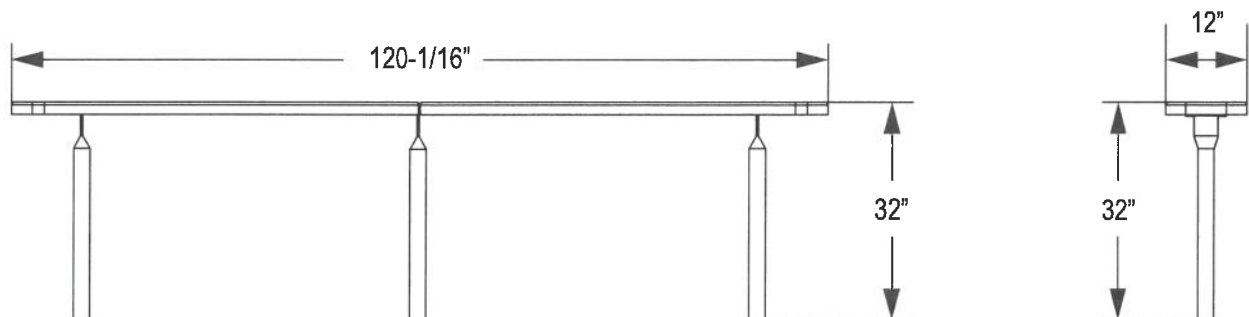
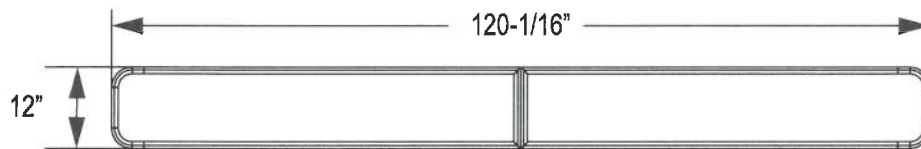








111 North River Road
North Aurora, IL 60542
Phone: (800) 323-5664
Fax: (630) 897-0573
sales@belson.com

Model # 942S-V10**Dimension Sheet****10' Park Bench W/Out Back, 2" X 12" Planks, Inground, Diamond**

Item 3D.







Cottage Floors - Flooring America

8365 Monterey St.

Gilroy CA 95020

408-842-0215 408-842-1018

Quote #

9476

Customer PO

Contract #

Date

5/17/2018

Sales Person1

Thomas Ruiz

Sales Person2

Acct # 2554
 For: 408 8428297 Fax 408 8486424

Ship To: 7100881

Gilroy Unified School Dis
 7810 Arroyo Circle
 Gilroy, CA 95020

LUIGI APREA
 STEPS TO STAGE
 Gilroy, CA 9-5020

Type	Product Description Labor Description	Color / Item Number Room
Carpet		
<i>Materials</i>	EXCITEMENT PLUS	07 SEA BREEZE
<i>Labor</i>	Install - Commercial Glue Down includes standard glue	STAGE STEPS
Removal		
<i>Labor</i>	Remove - Glue Down Carpet	STAGE STEPS
Labor		
<i>Labor</i>	Install - Custom Steps	STAGE STEPS
Removal		
<i>Labor</i>	Dump Fee - Carpet - Commercial and Residential and Pad	

Information

Totals

Grand Total \$865.13

Date Ok #
 Deposit

Buyer _____ Date _____ Seller _____ Date _____



Dan McAuliffe <dan.mcauliffe@gilroyunified.org>

Carpet Replacement

Christine Anderson <christine.anderson@gilroyunified.org>

Fri, May 11, 2018 at 1:33 PM

To: Dan McAuliffe <dan.mcauliffe@gilroyunified.org>, Janet Burke <janet.burke@gilroyunified.org>

Hi All,

I have 3 rooms at Rucker that could use new carpet. Room #s 14,15,19. That's it so far :)

--

Christine Anderson
Principal
Rucker Elementary School GUSD
408-706-4412

"The illiterate of the 21st Century will not be those who cannot read and write, but those who cannot learn, unlearn and relearn."
Alvin Toffler

Cottage Floors - Flooring America

8365 Monterey St.
 Gilroy CA 95020
 408-842-0215 408-842-1018

Quote #

9439

Customer PO

Contract #

Date

5/14/2018

Sales Person1

Thomas Ruiz

Sales Person2

Acct # 2554
 For: 408 8428297 Fax 408 842 6974

Ship To:

Gilroy Unified School Dis
 7810 Arroyo Circle
 Gilroy, CA 95020

RUCKER
 ROOM 14
 Gilroy, CA 95020

Type	Product Description Labor Description	Color / Item Number Room
Carpet		
Materials	EXCITEMENT PLUS	07 SEA BREEZE
Labor	Install - Commercial Glue Down	ROOM 14
Removal		
Labor	Remove - Glue Down Carpet	ROOM 14
Wall Base		
Materials	4 inch Rubber Base with Toe	Black
Labor	Install - Rubber base	
Removal		
Labor	Remove - Dump Fee	
Unclassified		
Materials	California Stewardship Assessment Fee	Non-Taxable

Information

Totals

Grand Total \$2,986.25

 Date OK #
 Deposit

Buyer _____ Date _____ Seller _____ Date _____

Cottage Floors - Flooring America

8365 Monterey St.
Gilroy CA 95020
408-842-0215 408-842-1018

Item 3F

Quote

Quote #

9440

Customer PO

Contract #

Date

5/14/2018

Sales Person1

Thomas Ruiz

Sales Person2

Acct # 2554
For: 408 8428297 Fax 408 842 6974

Ship To:

Gilroy Unified School Dis
7810 Arroyo Circle
Gilroy, CA 95020

RUCKER
ROOM 15
Gilroy, CA 9-5020

Type	Product Description Labor Description	Color / Item Number Room
Carpet		
Materials	EXCITEMENT PLUS	07 SEA BREEZE
Labor	Install - Commercial Glue Down	ROOM 15
Removal		
Labor	Remove - Glue Down Carpet	ROOM 15
Wall Base		
Materials	4 inch Rubber Base with Toe	Black
Labor	Install - Rubber base	
Removal		
Labor	Remove - Dump Fee	
Unclassified		
Materials	California Stewardship Assessment Fee	Non-Taxable

Information

Totals

Grand Total

\$2,986.25

Date Ck#

Deposit

Buyer _____ Date _____ Seller _____ Date _____

Cottage Floors - Flooring America

8365 Monterey St.

Gilroy CA 95020

408-842-0215 408-842-1018

Quote #

9441

Customer PO

Contract #

Date

5/14/2018

Sales Person1

Thomas Ruiz

Sales Person2

Acct # 2554
 For: 408 8428297 Fax 408 842 6974

Ship To:

Gilroy Unified School Dis
 7810 Arroyo Circle
 Gilroy, CA 95020

RUCKER
 ROOM 19
 Gilroy, CA 9-5020

Type	Product Description Labor Description	Color / Item Number Room
Carpet		
<i>Materials</i>	EXCITEMENT PLUS	07 SEA BREEZE
<i>Labor</i>	Install - Commercial Glue Down	ROOM 19
Removal		
<i>Labor</i>	Remove - Glue Down Carpet	ROOM 19
Wall Base		
<i>Materials</i>	4 inch Rubber Base with Toe	Black
<i>Labor</i>	Install - Rubber base	
Removal		
<i>Labor</i>	Remove - Dump Fee	
Unclassified		
<i>Materials</i>	California Stewardship Assessment Fee	Non-Taxable
Information		Totals

Grand Total

\$2,986.25

Date

Deposit

Buyer _____ Date _____ Seller _____ Date _____

Item 3F.

Dan McAuliffe <dan.mcauliffe@gilroyunified.org>

Re: Floors

Christine Pereira <christine.vasquez@gilroyunified.org>

Wed, May 2, 2018 at 5:16 PM

To: Dan McAuliffe <dan.mcauliffe@gilroyunified.org>

Hi Dan,

I spoke to my custodians and this is what they said they would like you to evaluate:

- Room 9, 11, 12, 17, 18, 23, 24, 25
- Staff Restroom next Rm 13
- They also were wondering about 13, 14, 15 and 16~ if they were getting carpet.

Thank you so much for your support!!!

Christine

Christine Vasquez

Glen View Principal

christine.vasquez@gilroyunified.org

School (669)205-4400

Cell (408) 710-7187

On Mon, Apr 30, 2018 at 2:27 PM, Dan McAuliffe <dan.mcauliffe@gilroyunified.org> wrote:

Good Afternoon,

Please let me know if you have any floors in classrooms or other areas of your site that you want us to look at for summer repair or replacement. I have heard from some of you already and we are developing our summer flooring plans now.

Thanks,

--

Dan McAuliffe

Gilroy Unified School District

Maintenance & Operations Manager

408-842-8297 office

408-848-6424 fax

408-710-8480 cell

Dan.McAuliffe@gilroyunified.org

Cottage Floors - Flooring America

8365 Monterey St.
 Gilroy CA 95020
 408-842-0215 408-842-1018

Quote #
 9385
 Customer PO
 Contract #
 Date
 5/4/2018
 Sales Person1
 Thomas Ruiz
 Sales Person2

Acct # 2554
 For: 408 8428297 Fax 408 842 6974

Ship To:

Gilroy Unified School Dis
 7810 Arroyo Circle
 Gilroy, CA 95020

GLEN VEIW
 PRINCEVALLE ROOM #9
 Gilroy, CA 9-5020

Type	Product Description Labor Description	Color / Item Number Room
Carpet		
<i>Materials</i>	EXCITEMENT PLUS	07 SEA BREEZE
<i>Labor</i>	Install - Commercial Glue Down	ROOM 9
Removal		
<i>Labor</i>	Remove - Glue Down Carpet	P-28
Wall Base		
<i>Materials</i>	4 inch Rubber Base with Toe	Black
<i>Labor</i>	Install - Rubber base	
Removal		
<i>Labor</i>	Remove - Dump Fee	
Unclassified		
<i>Materials</i>	California Stewardship Assessment Fee	Non-Taxable

Information

Totals

Grand Total \$2,912.13
 Date OK #
 Deposit

Buyer _____ Date _____ Seller _____ Date _____

Cottage Floors - Flooring America

8365 Monterey St.

Gilroy CA 95020

408-842-0215 408-842-1018

Quote #

9386

Customer PO

Contract #

Date

5/4/2018

Sales Person1

Thomas Ruiz

Sales Person2

Acct # 2554
 For: 408 8428297 Fax 408 842 6974

Ship To:

Gilroy Unified School Dis
 7810 Arroyo Circle
 Gilroy, CA 95020

GLEN VEIW
 PRINCEVILLE ROOM #11
 Gilroy, CA 9-5020

Type	Product Description Labor Description	Color / Item Number Room
Carpet		
Materials	EXCITEMENT PLUS	07 SEA BREEZE
Labor	Install - Commercial Glue Down	ROOM 11
Removal		
Labor	Remove - Glue Down Carpet	ROOM 11
Wall Base		
Materials	4 inch Rubber Base with Toe	Black
Labor	Install - Rubber base	
Removal		
Labor	Remove - Dump Fee	
Unclassified		
Materials	California Stewardship Assessment Fee	Non-Taxable

Information

Totals

Grand Total	\$2,912.13
Deposit	
Date	Ok #

Buyer _____ Date _____ Seller _____ Date _____

Cottage Floors - Flooring America

8365 Monterey St.

Gilroy CA 95020

408-842-0215 408-842-1018

Quote #

9387

Customer PO

Contract #

Date

5/4/2018

Sales Person1

Thomas Ruiz

Sales Person2

Acct # 2554
 For: 408 8428297 Fax 408 842 6974

Ship To:

Gilroy Unified School Dis
 7810 Arroyo Circle
 Gilroy, CA 95020

GLEN VEIW
 PRINCEVALLE ROOM #12
 Gilroy, CA 9-5020

Type	Product Description Labor Description	Color / Item Number Room
Carpet		
Materials	EXCITEMENT PLUS	07 SEA BREEZE
Labor	Install - Commercial Glue Down	ROOM 12
Removal		
Labor	Remove - Glue Down Carpet	ROOM 12
Wall Base		
Materials	4 inch Rubber Base with Toe	Black
Labor	Install - Rubber base	
Removal		
Labor	Remove - Dump Fee	
Unclassified		
Materials	California Stewardship Assessment Fee	Non-Taxable

Information

Totals

Grand Total	\$2,912.13
Date	5/4/2018
Deposit	

Buyer _____ Date _____ Seller _____ Date _____

Cottage Floors - Flooring America

8365 Monterey St.

Gilroy CA 95020

408-842-0215 408-842-1018

Quote #

9388

Customer PO

Contract #

Date

5/4/2018

Sales Person1

Thomas Ruiz

Sales Person2

Acct # 2554
 For: 408 8428297 Fax 408 842 6974

Ship To:

Gilroy Unified School Dis
 7810 Arroyo Circle
 Gilroy, CA 95020

GLEN VEIW
 PRINCEVALLE ROOM #17
 Gilroy, CA 9-5020

Type	Product Description Labor Description	Color / Item Number Room
Carpet		
<i>Materials</i>	EXCITEMENT PLUS	07 SEA BREEZE
<i>Labor</i>	Install - Commercial Glue Down	ROOM 17
Removal		
<i>Labor</i>	Remove - Glue Down Carpet	ROOM 17
Wall Base		
<i>Materials</i>	4 inch Rubber Base with Toe	Black
<i>Labor</i>	Install - Rubber base	
Removal		
<i>Labor</i>	Remove - Dump Fee	
Unclassified		
<i>Materials</i>	California Stewardship Assessment Fee	Non-Taxable

Information

Totals

Grand Total \$3,010.01

 Date CK #
 Deposit

Buyer _____ Date _____ Seller _____ Date _____

Cottage Floors - Flooring America

8365 Monterey St.

Gilroy CA 95020

408-842-0215 408-842-1018

Item 3F

Quote

Quote #

9389

Customer PO

Contract #

Date

5/4/2018

Sales Person1

Thomas Ruiz

Sales Person2

Acct # 2554
For: 408 8428297 Fax 408 842 6974

Ship To:

Gilroy Unified School Dis
7810 Arroyo Circle
Gilroy, CA 95020GLEN VIEW
PRINCEVALLE ROOM #18
Gilroy, CA 9-5020

Type	Product Description Labor Description	Color / Item Number Room
Carpet		
Materials	EXCITEMENT PLUS	07 SEA BREEZE
Labor	Install - Commercial Glue Down	ROOM 18
Removal		
Labor	Remove - Glue Down Carpet	ROOM 18
Wall Base		
Materials	4 inch Rubber Base with Toe	Black
Labor	Install - Rubber base	
Removal		
Labor	Remove - Dump Fee	
Unclassified		
Materials	California Stewardship Assessment Fee	Non-Taxable

Information

Totals

Grand Total	\$3,010.01
Date	5/4/2018
Deposit	

Buyer _____ Date _____ Seller _____ Date _____

Cottage Floors - Flooring America

8365 Monterey St.

Gilroy CA 95020

408-842-0215 408-842-1018

Item 3F

Quote

Quote #

9390

Customer PO

Contract #

Date

5/4/2018

Sales Person1

Thomas Ruiz

Sales Person2

Acct # 2554
For: 408 8428297 Fax 408 842 6974

Ship To:

Gilroy Unified School Dis
7810 Arroyo Circle
Gilroy, CA 95020GLEN VEIW
PRINCEVALLE ROOM #23
Gilroy, CA 95020

Type	Product Description Labor Description	Color / Item Number Room
Carpet		
Materials	EXCITEMENT PLUS	07 SEA BREEZE
Labor	Install - Commercial Glue Down	ROOM 23
Removal		
Labor	Remove - Glue Down Carpet	ROOM 23
Wall Base		
Materials	4 inch Rubber Base with Toe	Black
Labor	Install - Rubber base	
Removal		
Labor	Remove - Dump Fee	
Unclassified		
Materials	California Stewardship Assessment Fee	Non-Taxable

Information

Totals

Grand Total \$3,010.01

Date Ck #
Deposit

Buyer _____ Date _____ Seller _____ Date _____

Cottage Floors - Flooring America

8365 Monterey St.
 Gilroy CA 95020
 408-842-0215 408-842-1018

Quote #

9391

Customer PO

Contract #

Date

5/4/2018

Sales Person1

Thomas Ruiz

Sales Person2

Acct # 2554
 For: 408 8428297 Fax 408 842 6974

Ship To:

Gilroy Unified School Dis
 7810 Arroyo Circle
 Gilroy, CA 95020

GLEN VEIW
 PRINCEVALLE ROOM #24
 Gilroy, CA 9-5020

Type	Product Description Labor Description	Color / Item Number Room
Carpet		
<i>Materials</i>	EXCITEMENT PLUS	07 SEA BREEZE
<i>Labor</i>	Install - Commercial Glue Down	ROOM 24
Removal		
<i>Labor</i>	Remove - Glue Down Carpet	ROOM 24
Wall Base		
<i>Materials</i>	4 inch Rubber Base with Toe	Black
<i>Labor</i>	Install - Rubber base	
Removal		
<i>Labor</i>	Remove - Dump Fee	
Unclassified		
<i>Materials</i>	California Stewardship Assessment Fee	Non-Taxable

Information

Totals

Grand Total	\$3,010.01
Date	Gk #
Deposit	

Buyer _____ Date _____ Seller _____ Date _____

Cottage Floors - Flooring America

8365 Monterey St.

Gilroy CA 95020

408-842-0215 408-842-1018

Item 3F

Quote

Quote #

9392

Customer PO

Contract #

Date

5/4/2018

Sales Person1

Thomas Ruiz

Sales Person2

Acct # 2554
For: 408 8428297 Fax 408 842 6974

Ship To:

Gilroy Unified School Dis
7810 Arroyo Circle
Gilroy, CA 95020GLEN VIEW
PRINCEVALLE ROOM #25
Gilroy, CA 95020

Type	Product Description Labor Description	Color / Item Number Room
Carpet		
Materials	EXCITEMENT PLUS	07 SEA BREEZE
Labor	Install - Commercial Glue Down	ROOM 25
Removal		
Labor	Remove - Glue Down Carpet	ROOM 25
Wall Base		
Materials	4 inch Rubber Base with Toe	Black
Labor	Install - Rubber base	
Removal		
Labor	Remove - Dump Fee	
Unclassified		
Materials	California Stewardship Assessment Fee	Non-Taxable

Information

Totals

Grand Total	\$3,010.01
Date	CK#
Deposit	

Buyer _____ Date _____ Seller _____ Date _____

Item 3F

Quote

Cottage Floors - Flooring America

8365 Monterey St.

Gilroy CA 95020

408-842-0215 408-842-1018

Quote #

9393

Customer PO

Contract #

Date

5/4/2018

Sales Person1

Thomas Ruiz

Sales Person2

Acct # 2554
 For: 408 8426297 Fax 408 8486424

Gilroy Unified School Dis
 7810 Arroyo Circle
 Gilroy, CA 95020

Ship To:

GLEN VEIW
 PRINCEVALLE STAFF RESTROOMNEXT
 TO ROOM 13
 Gilroy, CA 9-5020

Type	Product Description Labor Description	Color / Item Number Room
Steps		
Materials	TERRENE	18024 CENIA
Labor	Install - Inlaid Vinyl Residential includes Standard Prep for Vinyl	STAFF BATHROOM
Vinyl		
Labor	Install - Coving	BATHROOM
Removal		
Labor	Remove - Vct	BATHROOM
Furniture		
Labor	Remove And Reset - Toilets In and Out	

Information

Totals

Grand Total

\$392.00

Date

Deposit

Buyer _____ Date _____ Seller _____ Date _____

Work Order ID: 14062

Completion Date:

Description	Please consider these classrooms for new carpet: A1,P27,K17,P28,K19,B6 B8 needs the seams fixed.		
Location	El Roble Elementary	Building	Administration Building
Area	Classroom	Priority	Medium
Area Number		Craft	Carpet Repair
Category		Type	
Status	Work In Progress	Estimated Hour	0.00
Assigned To	McAuliffe, Dan	Requester	Kristen Reeder 408-842-8234
Estimated Start	4/23/2018	Request Date	4/23/2018
Est. Completion Date		Req. Completion Date	
Budget Code		Purpose Code	Reactive Maintenance
Project Code		Project Description	
Equip Item No.		Equip Desc	
Notes			

Purchases						To Date:	\$0.00
Date	Inv/Ref	Description	Supplier	Pool	Qty	Cost Each	

Labor			To Date:	h
Date	Name			Hours

Completed by Tom Purz @ Cella
4.26.18

Quote

Cottage Floors - Flooring America

8365 Monterey St.
 Gilroy CA 95020
 408-842-0215 408-842-1018

Quote #

9367

Customer PO

Contract #

Date

4/26/2018

Sales Person1

Thomas Ruiz

Sales Person2

Acct # 2554
 For: 408 8428297 Fax 408 842 6974

Ship To:

Gilroy Unified School Dis
 7810 Arroyo Circle
 Gilroy, CA 95020

EL ROBLE
 3 RD STREET K-18 & OFFICE
 Gilroy, CA 9-5020

Type	Product Description Labor Description	Color / Item Number Room
Carpet		
<i>Materials</i>	EXCITEMENT PLUS	07 SEA BREEZE
<i>Labor</i>	Install - Commercial Glue Down	K-18 & OFFICE
Removal		
<i>Labor</i>	Remove - Glue Down Carpet	K-18 & OFFICE
Wall Base		
<i>Materials</i>	4 inch Rubber Base with Toe	Black
<i>Labor</i>	Install - Rubber base	
Removal		
<i>Labor</i>	Remove - Dump Fee	
Unclassified		
<i>Materials</i>	California Stewardship Assessment Fee	Non-Taxable

Information

Totals

Grand Total

\$3,869.76

Date

Deposit

Buyer _____ Date _____ Seller _____ Date _____

Cottage Floors - Flooring America
 8365 Monterey St.
 Gilroy CA 95020
 408-842-0215 408-842-1018

Quote #

9364

Customer PO

Contract #

Date

4/26/2018

Sales Person1

Thomas Ruiz

Sales Person2

Acct # 2554
 For: 408 8428297 Fax 408 842 6974

Ship To:

Gilroy Unified School Dis
7810 Arroyo Circle
Gilroy, CA 95020

EL ROBLE
3 RD STREET B-6
Gilroy, CA 9-5020

Type	Product Description Labor Description	Color / Item Number Room
Carpet		
<i>Materials</i>	EXCITEMENT PLUS	07 SEA BREEZE
<i>Labor</i>	Install - Commercial Glue Down	B-6
Removal		
<i>Labor</i>	Remove - Glue Down Carpet	B-6
Wall Base		
<i>Materials</i>	4 inch Rubber Base with Toe	Black
<i>Labor</i>	Install - Rubber base	
Removal		
<i>Labor</i>	Remove - Dump Fee	
Unclassified		
<i>Materials</i>	California Stewardship Assessment Fee	Non-Taxable

Information

Totals

Grand Total	\$3,584.83
Date	ck #
Deposit	

Buyer _____ Date _____ Seller _____ Date _____

Cottage Floors - Flooring America

8365 Monterey St.
 Gilroy CA 95020
 408-842-0215 408-842-1018

Quote #

9365

Customer PO

Contract #

Date

4/26/2018

Sales Person1

Thomas Ruiz

Sales Person2

Acct # 2554
 For: 408 8428297 Fax 408 842 6974

Ship To:

Gilroy Unified School Dis
 7810 Arroyo Circle
 Gilroy, CA 95020

EL ROBLE
 3 RD STREET A-1
 Gilroy, CA 9-5020

Type	Product Description Labor Description	Color / Item Number Room
Carpet		
<i>Materials</i>	EXCITEMENT PLUS	07 SEA BREEZE
<i>Labor</i>	Install - Commercial Glue Down	A-1
Removal		
<i>Labor</i>	Remove - Glue Down Carpet	A-1
Wall Base		
<i>Materials</i>	4 inch Rubber Base with Toe	Black
<i>Labor</i>	Install - Rubber base	
Removal		
<i>Labor</i>	Remove - Dump Fee	
Unclassified		
<i>Materials</i>	California Stewardship Assessment Fee	Non-Taxable

Information

Totals

Grand Total \$3,124.55

Date Ck #
 Deposit

Buyer _____ Date _____ Seller _____ Date _____

Cottage Floors - Flooring America

8365 Monterey St.

Gilroy CA 95020

408-842-0215 408-842-1018

Quote #

9366

Customer PO

Contract #

Date

4/26/2018

Sales Person1

Thomas Ruiz

Sales Person2

Acct # 2554
For: 408 8428297 Fax 408 842 6974

Ship To:

Gilroy Unified School Dis
7810 Arroyo Circle
Gilroy, CA 95020EL ROBLE
3 RD STREET K-17
Gilroy, CA 9-5020

Type	Product Description Labor Description	Color / Item Number Room
Carpet		
<i>Materials</i>	EXCITEMENT PLUS	07 SEA BREEZE
<i>Labor</i>	Install - Commercial Glue Down	K-17
Removal		
<i>Labor</i>	Remove - Glue Down Carpet	K-17
Wall Base		
<i>Materials</i>	4 inch Rubber Base with Toe	Black
<i>Labor</i>	Install - Rubber base	
Removal		
<i>Labor</i>	Remove - Dump Fee	
Unclassified		
<i>Materials</i>	California Stewardship Assessment Fee	Non-Taxable

Information

Totals

Grand Total \$3,046.93

Date Ck.#
Deposit

Buyer _____ Date _____ Seller _____ Date _____

Cottage Floors - Flooring America8365 Monterey St.
Gilroy CA 95020

408-842-0215 408-842-1018

Item 3F

Quote

Quote #

9369

Customer PO

Contract #

Date

4/26/2018

Sales Person 1

Thomas Ruiz

Sales Person 2

Acct # 2554
For: 408 8428297 Fax 408 842 6974

Ship To:

Gillroy Unified School Dis
7810 Arroyo Circle
Gillroy, CA 95020EL ROBLE
3 RD STREET P-27
Gillroy, CA 9-5020

Type	Product Description Labor Description	Color / Item Number Room
Carpet		
Materials	EXCITEMENT PLUS	07 SEA BREEZE
Labor	Install - Commercial Glue Down	P-27
Removal		
Labor	Remove - Glue Down Carpet	P-27
Wall Base		
Materials	4 inch Rubber Base with Toe	Black
Labor	Install - Rubber base	
Removal		
Labor	Remove - Dump Fee	
Unclassified		
Materials	California Stewardship Assessment Fee	Non-Taxable

Information

Totals

Grand Total \$3,001.61

Date Ck-#
Deposit

Buyer _____ Date _____ Seller _____ Date _____

Cottage Floors - Flooring America
 8365 Monterey St.
 Gilroy CA 95020
 408-842-0215 408-842-1018

Item 3F

Quote

Quote #

9370

Customer PO

Contract #

Date

4/26/2018

Sales Person1

Thomas Ruiz

Sales Person2

Acct # 2554
 For: 408 8428297 Fax 408 842 6974

Ship To:

Gilroy Unified School Dis
 7810 Arroyo Circle
 Gilroy, CA 95020

EL ROBLE
 3 RD STREET P-28
 Gilroy, CA 9-5020

Type	Product Description Labor Description	Color / Item Number Room
Carpet		
<i>Materials</i>	EXCITEMENT PLUS	07 SEA BREEZE
<i>Labor</i>	Install - Commercial Glue Down	P-28
Removal		
<i>Labor</i>	Remove - Glue Down Carpet	P-28
Wall Base		
<i>Materials</i>	4 inch Rubber Base with Toe	Black
<i>Labor</i>	Install - Rubber base	
Removal		
<i>Labor</i>	Remove - Dump Fee	
Unclassified		
<i>Materials</i>	California Stewardship Assessment Fee	Non-Taxable

Information

Totals

Grand Total	\$3,001.61
Date	OK #
Deposit	

Buyer _____ Date _____ Seller _____ Date _____

Item 3F

Quote

Cottage Floors - Flooring America

8365 Monterey St.

Gilroy CA 95020

408-842-0215 408-842-1018

Quote #

9371

Customer PO

Contract #

Date

4/26/2018

Sales Person1

Thomas Ruiz

Sales Person2

Acct # 2554
For: 408 8428297 Fax 408 8486424

Ship To:

Gilroy Unified School Dis
7810 Arroyo Circle
Gilroy, CA 95020EL ROBLE
3 RD STREET PB-8
Gilroy, CA 9-5020

Type	Product Description Labor Description	Color / Item Number Room
Furniture		

Information

Totals

REPAIR SEAMS ----- NO CHARGE

Grand Total \$0.00

Date Ck #
Deposit

Buyer _____ Date _____ Seller _____ Date _____

Work Order ID: 13626

Completion Date:

Description	Replace old carpet in ASB room next to library		
Location	South Valley Middle School	Building	F Building
Area	Classroom	Priority	Medium
Area Number	ASB classroom	Craft	General Maintenance
Category		Type	
Status	Work In Progress	Estimated Hour	0.00
Assigned To	McAuliffe, Dan	Requester	Sonia De la Cruz 408-847-2828
Estimated Start	3/22/2018	Request Date	3/22/2018
Est. Completion Date		Req. Completion Date	
Budget Code		Purpose Code	Reactive Maintenance
Project Code		Project Description	
Equip Item No.		Equip Desc	
Notes			

Purchases					To Date:	\$0.00
Date	Inv/Ref	Description	Supplier	Pool	Qty	Cost Each

Labor			To Date:	h
Date	Name			Hours

Cottage Floors - Flooring America

8365 Monterey St.

Gilroy CA 95020

408-842-0215 408-842-1018

Quote #

9301

Customer PO

Contract #

Date

4/3/2018

Sales Person1

Thomas Ruiz

Sales Person2

Acct # 2554
 For: 408 8428297 Fax 408 842 6974

Ship To:

Gilroy Unified School Dis
 7810 Arroyo Circle
 Gilroy, CA 95020

GILROY MIDDLE SCHOOL
 ASB ROOM
 Gilroy, CA 9-5020

SVMS

Type	Product Description Labor Description	Color / Item Number Room
Carpet		
Materials	EXCITEMENT PLUS	07 SEA BREEZE
Labor	Install - Commercial Glue Down	ROOM 31
Removal		
Labor	Remove - Glue Down Carpet	ROOM 31
Wall Base		
Materials	4 inch Rubber Base with Toe	Black
Labor	Install - Rubber base	
Removal		
Labor	Remove - Dump Fee	
Unclassified		
Materials	California Stewardship Assessment Fee	Non-Taxable

Information

Totals

Grand Total \$2,258.79

Date: CK #
 Deposit

Buyer _____ Date _____ Seller _____ Date _____

STI

Exit Door Alarm, 105dB, 9VDC Power Source

Item # 49W752 Mfr. Model # STI-6400-G Catalog Page # N/A UNSPSC # 31162804



Your Price **\$110.36** / each

☒ One Time Delivery
☐ Auto Reorder

ADD TO CART

+ Add to List

☒ Shipping ☐ Pickup

Ships from supplier. Expected to arrive on or before **Mon. Jun 18.**

Ship To **95380** ([Change](#))

☆☆☆☆☆

[Be the first to write a review](#)

Shipping Weight **1.17 lbs.**

Country of Origin **USA** | *Country of Origin is subject to change.*

Note: Product availability is real-time updated and adjusted continuously. The product will be reserved for you when you complete your order. [More](#)

How can we [improve our Product Images?](#)

☐ Compare

TECHNICAL SPECS

Item	Exit Stopper Door Alarm, Green		Activated By	Reed Switch/Magnet	
Inside Keyed Cylinder Type	Mortise		Body Length	5-3/8"	

SAFETY TECHNOLOGY INTERNATIONAL

Exit Door Alarm,Annunciation,95 to 105dB

Item # 1DPE1 Mfr. Model # STI-6400 Catalog Page # 2049 UNSPSC # 46171604



How can we improve our Product Images?

Compare

Your Price **\$106.92** / each

One Time Delivery
Auto Reorder

1

ADD TO CART

+ Add to List

Shipping Pickup

Expected to arrive Tue. May 29.

Ship To 95380 (Change)

Add Extended Protection Plan for \$37.50 each.

Jump to: Required Accessories

4.7 of 5 | 3 reviews | Write a Review

Shipping Weight 1.2 lbs.

Country of Origin USA | Country of Origin is subject to change.

Note: Product availability is real-time updated and adjusted continuously. The product will be reserved for you when you complete your order. More

Item 3G.

PRODUCT DETAILS

Alerts to unauthorized exits and entries through an emergency exit door. In Exit Alarm mode, alarm can be set to sound for 30 sec., 3 min., or indefinitely. In Annunciator mode, detector announces door entry. Select 15-sec. entry delay or immediate alarm.

February 19, 2018

Dan McAuliffe
Maintenance & Operations Manager
Gilroy Unified School District
220 Swanston Lane,
Gilroy, CA 95020

Re: Roofing at Luigi Aprea

Dear Dan,

As you are aware, the built-up roofing on three of the six buildings on campus was redone in 2016. The three remaining buildings still have the original, 1992 cap sheet roofs in place. Action is needed to address the long-term waterproofing needs for the campus.

We are recommending that the remaining three buildings have a re-enforced, fluid applied system installed over the existing cap sheet roofs. In addition, repairs to the 3-tab shingles would be incorporated into the scope of work to address areas that have been vandalized. This would provide another 20+ years of waterproofing protection to the building and avoid disruptive tear-off and replacement or damaging roof leaks.

Below are photos illustrating some of the current condition on these 3 roof levels.

1. Overview of the roof. Typical of all three remaining buildings. The roofs are worn out and need to be addressed.



2. Missing shingles on the parapet wall due to vandalism. The plywood is exposed.



3. Heavy granule loss – the shiny areas are fiberglass fibers that are visible due to heavy surface erosion.



The current rough order magnitude cost estimate for the three buildings is approximately \$140,000. I would recommend having the work done during the school year and avoiding the peak summer construction period. If this is to be done during the peak summer months, I would add 15-20% to this estimate due to market conditions and the local bidding practices of the Contractors.

Sincerely,

A handwritten signature in black ink, appearing to read "Dan Lajeunesse".

Dan Lajeunesse
Field Advisor

February 18, 2018

Dan McAuliffe
Gilroy Unified School District
220 Swanston Lane,
Gilroy, CA 95020

Re: Brownell Gym

Dear Mr. McAuliffe,

A site visit was conducted to investigate the on-going leak at the Brownell Gym. The following is a summary of my findings and recommendations:

Overview:

The roof on the gymnasium consists of a 4 ply built up roof assembly over rigid insulation and a wood deck. The roof is estimated to have been installed in the mid 1990's. Roofs of this construction typically have a life expectancy of 25 years assuming routine maintenance.

Condition Summary:

There is severe granule loss throughout the roof, creating a high heat load for the building. In addition, splits in the membrane are beginning to develop along the low eave near the drains. The roofing is heavily weathered in areas, with isolated areas of fiberglass fibers exposed. It is difficult to determine if the existing leak is a result of the workmanship of the roofing repairs where the new HVAC unit being installed, or if it is due to the weathered, deteriorated state of the roof in general.

Recommendations:

Comprehensive diagnostics consisting of a thermal infrared scan of the roof should be performed to identify any areas of wet insulation and to determine the feasibility of restoring the roof vs. replacement. The costs for the Diagnostics is approximately \$1,000 and would need to be done in the evening time just after sunset.

If the building is to remain in use for the long-term and assuming the insulation within the assembly is found to be dry, restoration of the roof should be performed before the system deteriorates any further. This would provide significant cost savings to the District as roof restoration is typically half the cost of replacement. In addition, the work can be done while the building is occupied with no disruptive odor or dust or loud noises associated with roof tear-off or installation. The finished product is a highly reflective, energy efficient roof surface which will lower the cooling demands and associated costs for this building.

Tremco Inc.

5674 Drysdale Drive, San Jose, CA 95124

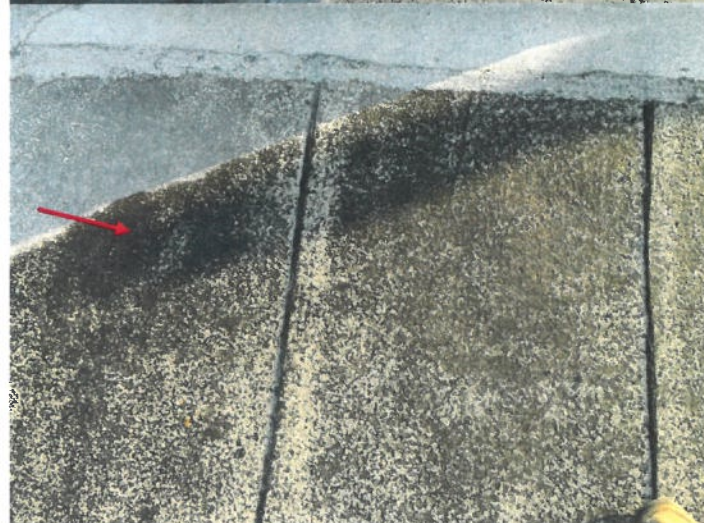
1. Overview of the roof.



2. Ridging and splitting conditions along the valley area..



3. Heavy granule loss resulting in elevated surface temperatures and heat drive into the building.

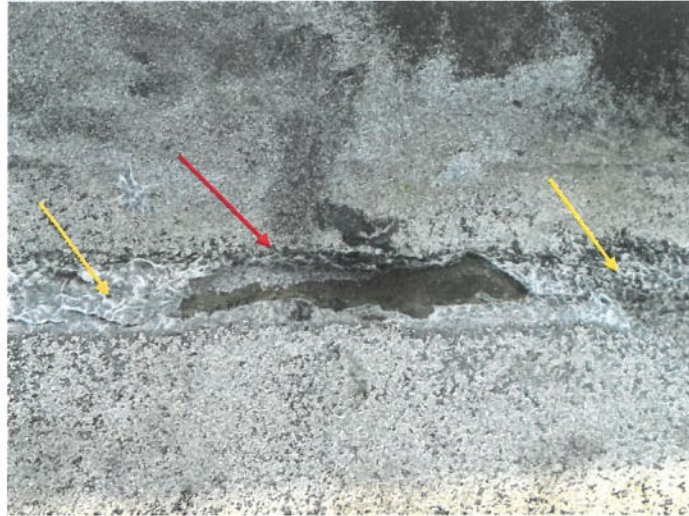


Tremco Inc.

5674 Drysdale Drive, San Jose, CA 95124



4. A split in the roof (red arrow).
The orange arrows point to exposed fiberglass fibers indicating a severely eroded and weathered roof surface.



The current cost estimates (ROM) to perform a comprehensive roof restoration is approximately \$75,000. This is assuming the roof diagnostics show minimal wet insulation and that the work is done outside of the busy summer construction window. If done during summer break, I would include a 15-20% bid contingency due to current supply/demand conditions in the market during the peak summer construction window.

Sincerely,

Dan Lajeunesse
Sr. Field Advisor

May 15, 2018

Dan McAuliffe
Gilroy Unified School District
220 Swanston Lane,
Gilroy, CA 95020

Re: Gilroy High Roofing Needs

Dear Mr. McAuliffe,

The following is a summary of the roofing needs at Gilroy High School:

Overview:

The roofing at this campus was installed in 4 phases, starting in 2000 and ending in 2003. In total, there is approximately 144,000 sq ft of built-up roofing at this campus with a current replacement cost exceeding \$2.75 million dollars.

Condition Summary:

The roofing on this campus is becoming heavily weathered. The older roofs (2000 and 2001) are ridging and starting to split. The 3-tab shingles which provide waterproofing protection for the parapet walls are curling and falling off. In addition, extensive foot traffic from past modernization work has left several of the roofs with severe granule loss. The existing roof leaks remain manageable; however, as these roofs continue to age, they will become more widespread and severe.

Photo's depicting common conditions can be found on the following pages.

1. Heavily granule loss due to UV exposure and foot traffic during the HAC replacement project in 2007. The granules are critical to protecting the asphalt from UV exposure and reducing surface temperatures. UV ages the asphalt in the roof and shortens the life expectancy of the roof. High surface temperatures from darker surfaces are transferred into the building, creating increased demand for mechanical cooling (HVAC) and higher electricity costs.



Tremco Inc.

5674 Drysdale Drive, San Jose, CA 95124

2. Ridging and splitting conditions starting in the field of the roof. Also visible are past repairs to address leaks as a resulting of splitting in the roof membrane.



3. The 3-tab shingles on the parapet walls are falling off.



4. Staples were used to try to keep the shingles attached...



Tremco Inc.

5674 Drysdale Drive, San Jose, CA 95124

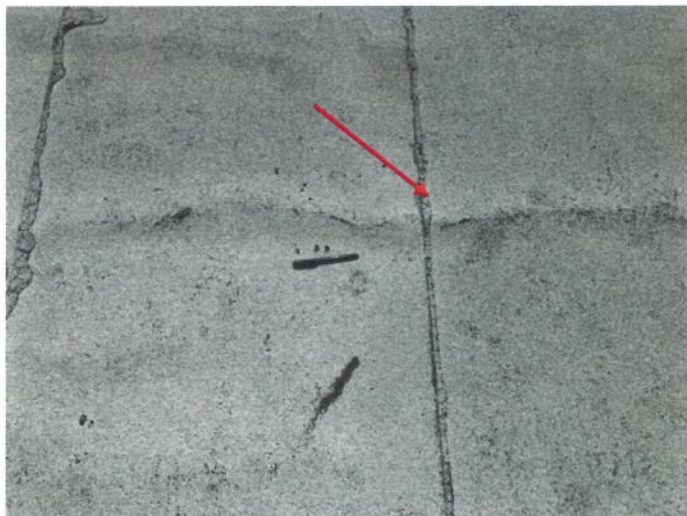
5. Shingles are not adhered and are curling along the bottom – this makes them susceptible to wind damage.



6. Staples have been used to keep the shingles from falling off.



7. A split developing in the roof membrane.



**Tremco Inc.**

5674 Drysdale Drive, San Jose, CA 95124

Recommendations:

Due to the extreme economics of roof replacement, a phased roof restoration program is recommended for this campus. Installing a Bio-based, urethane waterproofing system to the existing roofing will extend the life of the roofs for another 15-20 years. In addition, replacement of the 3-tab shingles on the roofs installed in 2000 and 2001 is also recommended as these shingles were never replaced at that time and are in failing condition.

Roof restoration is approximately half of the cost of roof replacement and is non-intrusive. The work can typically be done while the building is occupied with no disruptive odor or dust or loud noises associated with roof tear-off or installation. The finished product is a highly reflective, energy efficient roof surface which will lower the cooling demands and associated costs for this campus.

The following are current cost estimates for the roofing needs of this campus. Savings can be achieved by bundling buildings and utilizing the National IPA Co-op for material purchases.

Gilroy HS (2000 - 2004)	Year	Area	Roof Type	Budget
Bldg A (office & library)	2002/2004	15,000	Mod Bit	\$180,000.00
Bldg B	2000	13,750	Mod Bit w/ 3 tab shingles	\$210,000.00
BE 1 & BE 2	2000	4,600	FOAM	\$2,500.00
Bldg C	2001	14,380	Mod Bit w/ 3 tab shingles	\$210,000.00
Bldg CE	2002	8,800	Mod Bit	\$105,600.00
Bldg D	2001	15,000	Mod Bit w/ 3 tab shingles	\$210,000.00
Bldg E1	2001	7,200	Mod Bit w/ 3 tab shingles	\$100,000.00
Bldg E2	2001	4,300	Mod Bit w/ 3 tab shingles	\$62,000.00
Boys Lorcker Room	2003	8,000	Mod Bit	\$96,000.00
Girls Locker Room	2003	5,500	Mod Bit	\$66,000.00
Main & Aux Gym	2003	21,270	Mod Bit	\$255,240.00
Gym Lobby	2003	7,200	Mod Bit	\$86,400.00
M & H (2002)	2002	19,000	Mod Bit	\$228,000.00
		144,000		

Please do not hesitate to contact me if there are any questions or if you want further detail or revised cost estimates recommended work.

Sincerely,

Dan Lajeunesse
Sr. Field Advisor

Gilroy Unified School District

Roofing Asset Management Plan

Revised 1/8/2018

Item 3H.

Roof Level / Condition Maintenance & Operations	Year	GAR	Recommendation	Budget	2018	2019	2020	2021	2022
	2012		Maintain						
Rucker									
MPR	2013		Maintain						
Admin	2014		Maintain						
B,C,D Classroom Wings	2003		Restore within 5 years	\$150,000.00					
Eliot (2004) (low slope roofs only)									
Bldg A	2004		Restore within 5 years	\$62,400.00					
Bldg B	2004		Restore within 5 years	\$68,040.00					
Bldg C	2004		Restore within 5 years	\$196,200.00					
Bldg D	2004		Restore within 5 years	\$6,000.00					
Antonio Del Buono (1999)									
Metal Roofs	1999		Maintain; Repairs Required						
Main Roof	1999		Maintain; Replace within 5-10 years						
MPR Mechanical Well	1999		Replace within 5-10 years						
El Roble									
Admin	2003		Restore within 5 years	\$50,400.00					
Bldg A	2003		Restore within 5 years	\$73,200.00					
Bldg B	2003		Restore within 5 years	\$73,200.00					
Bldg C	2003		Restore within 5 years	\$73,200.00					
Bldg D	2003		Restore within 5 years	\$73,200.00					
Bldg K	2003		Restore within 5 years	\$55,200.00					
MPR (equipment wells)	2005		Maintain						
Glen View									
Modulars	2003		Restore within 5 years	\$78,600.00					
MPR	2005		Maintain						
New Admin & Classrooms	2015		Maintain						
9-12 wing	2006/07		Maintain						
CR Wing #2	1995		Replace	\$65,000.00					
Kinder	2015		Maintain						
Las Animas									
A	2007		Maintain, Restore within 5 years						
B	2007		Maintain, Restore within 5 years						
C	2007		Maintain, Restore within 5 years						
D/KINDER	2007		Maintain, Restore within 5 years						
Rod Kelley									
Equipment Wells & MP Bldg	2004		Maintain						
Shingle Mansards	1995		Replace within 5 years						

Gilroy Unified School District
Roofing Asset Management Plan
Revised 1/8/2018

Roof Level / Condition	Year	GAR	Recommendation	Budget	2018	2019	2020	2021	2022
Ascencion Solarsano									
Metal Roofs	2003		Maintain						
Equipment Well	2003		Restore within 5 years	\$48,000.00					
Brownell									
Admin & Classroom wings (1995?)	1995		Replace within 5 years	\$873,000.00					
Gymnasium - upper (1995?)	1995		Restore Immediately	\$75,000.00					
Gymnasium - shingle mansard (1995?)	1995		Replace within 5 years	\$110,000.00					
MPR - Upper Roof (2006)	2006		Maintain						
MPR - Shingle Mansard	2006		Maintain						
South Valley									
Administration (2003)	2003		Restore within 5 years						
All other buildings	1992		Replace						
Gilroy HS (2000 - 2004)									
Bldg A (office & library)	2002/2004		Restore within 5 years	\$180,000.00					
Bldg B	2000		Restore & Replace Parapet Wall	\$180,000.00					
BE 1 & BE 2	2000		Minor Repairs Required	\$2,500.00					
Bldg C	2001		Restore & Replace Parapet Wall	\$180,000.00					
Bldg CE (2002)	2002		Restore within 5 years	\$105,600.00					
Bldg D	2001		Restore & Replace Parapet Wall	\$192,000.00					
Bldg E1	2001		Restore & Replace Parapet Wall	\$95,000.00					
Bldg E2	2001		Restore & Replace Parapet Wall	\$60,000.00					
Boys Locker Room	2003		Restore within 5 years	\$96,000.00					
Girls Locker Room	2003		Restore within 5 years	\$66,000.00					
Main & Aux Gym	2003		Restore within 5 years	\$255,240.00					
Gym Lobby	2003		Restore within 5 years	\$86,400.00					
M & H (2002)	2002		Restore within 5 years	\$228,000.00					
Community Day Gym (MACSA)	2005		Restore within 5 years	\$120,000.00					
Luigi Aprea									
Bldgs 1, 3, 5	1992		Replace Immediately	\$140,000.00					
Bldgs 2, 4, & 6	2016		Maintain						
Tile Roofs	1992		Maintain						
District Office									
	2017		Maintain						
Mt. Madonna H.S.									
(equipment wells)	1992?		Replace within 5 years	\$105,000.00					
Comp Shingle Mansard	1992?		Replace within 5 years	\$80,000.00					

Gilroy Unified School District

Roofing Asset Management Plan

Revised 1/8/2018

Roof Level / Condition	Year	GAR	Recommendation	Budget	2018	2019	2020	2021	2022
IT Building	Main Roof	1980?	Replace						
	Equipment well	1985?	Replace						
Total				\$4,302,380					

Item 3H.



SATELLITE PAINTING INC.

INDUSTRIAL * COMMERCIAL * RESIDENTIAL

4848 San Felipe Rd. #150-515 San Jose CA.95135
PH:(408)264-1600 * Fax:(408)264-0300

MBE CERTIFIED
OPEN SHOP
SALES TAX INCLUDED
LICENSE NO. 563898
DIR # 1000028304

Job Name: Christopher High School Paint Project

Bid Date: 05-25-2018

Time: 2.00PM

Location : 850 Day Road

Gilroy , Ca. 95020

Architect: None

Estimator: Maurizio Vaccari
maurizio@satpainting.com

Cell: 408-849-9539

Drawing Date: None

Revisions None

Addenda(s) Noted: None

Bidding Divisions: Painting

PAINTING: Interior \$ 86,000.00
Exterior \$ 54,000.00

See scope sheet below for additional pricing and information

Satellite Painting, Inc.
Project: Christopher HS Paint Project
Bid Date: 05-25-2018

Alternates:

Inclusions

Exterior :

- 1- Exterior power wash and clean all exterior pre-cast concrete surfaces include rent of equipment , is going to be \$ 40,000.00
- 2- Paint metal hand rails , is going to be \$ 6,500.00
- 3- Paint exterior louver doors and frame in main entrance in wing A&B 1st & 2nd floor , prep , primer and paint is going to be \$ 7,500.00

Interior :

- 1- Repair damaged drywall and textures at interior walls in Gym , wings A, B, E , match existing texture and primer , is going to be \$ 16,000.00
- 2- Paint baseboard and wainscot trim in all corridor prep , prime as needed and paint two coats of finish , is going to be \$ 26,000.00
- 3- Paint all upper walls areas above wainscot in classroom corridor and hallways is going to be \$ 44,000.00
- 4- Is going to include labor & materials , masking , prep prime as needed and paint .

Note:

- Painting to be done at regular hour M-F .
- Damage Repair Financial responsibility per PDCA Standard P1-92
- Interior& Exterior painting to be done prior installation of factory finished and natural finished surfaces.
- Colors as indicated in plans
- Based on a continuous single phase project
- Prevailing Wages.

Exclusions:

- 1- Aluminum and natural finished surfaces (e.g., copper, stainless steel, etc.)
- 2- Factory finishes surfaces or scheduled to be finish in other sections besides the ones indicated above
- 3- Cabinets, shelving, stain
- 4- Exterior Roof , supports, etc
- 5- Wall covering, FRP, stripping, marker board
- 6- Ceiling T-Bar paint

Note:

This proposal contains **Zero (0)** hrs allowances for Trade Damage. It is recommended that you carry a contingency budget for anticipated trade damage touch up. Prices are based upon quoted scope of work and quote will become part of the contract documents. General Contractor to provide temporary power, task lighting, water, heating, ventilation as required per specification and one full set of plans and specifications for our use. General Contractor to ensure continuous and consistent daily work flow for all of Satellite Painting, Inc. crews. Special attention should be paid to PDCA (Painting and Decorating Contractors of America) Standards P1 thru P10, specially P1-4 (Financial Responsibility for Trade Damage Touch up and P7-04 (Proper Sequencing. This proposal is based on all PDCA standards and can be viewed at: www.pdca.org/standards). ***BID Insurance: Bid based on 2M/2M aggregate – WC: 1M**


Cypress Painting & Decorating, Inc.

PO Box 3607, Carmel, California 93921-3607

Ph 831.624.9018 Fx 831.624.9022

Calif. Lic. No. 484643 Email: cypresspainting@sbcglobal.net

FAX QUOTE 5/20/18

TO	Gilroy Unified School District	PROJECT DESCRIPTION / LOCATION	PLANS DATED	SPECS DATED	ADDENDA NOTED
ATTN	Dan McAuliffe	Christopher High School-Interior & Exterior Painting			
FAX			SECTIONS QUOTED	X 09900	
PHONE	408-710-8480		Questions regarding this quote should be directed to John Ruskell at 831.601.1110 cell or 831.624.9018 office		
Copy To		OWNER'S NAME / CONTACT	Cypress Painting & Decorating, Inc. DIR number is 100020914		
Copy To					

STANDARD BID QUALIFICATIONS AND EXCLUSIONS:

Quoted per plans, paint specs, or documents viewed and noted herein; (2) Quote does not include costs to repair or correct acts of vandalism, acts of God, or other third party damages; (3) Quote based on regular work hours and does not include overtime costs; (4) General contractor and or Owner may be named as additional insured as appropriate; (5) Insurance coverage/endorsements of bidding firm will be acceptable to all parties providing liability limits are met. Due to the litigious nature of form CG 2010 and 2037, these endorsements will not be used; (6) Terms and conditions of any subcontract or lower-tier agreement to be negotiable to the mutual satisfactions of all parties, and executed prior to the start of work or issuance of certificates of insurance excepting those certificates of insurance providing "Evidence of Coverage" only, or samples provided for clarification of coverage and wording; (7) This quote to be included as an integral part of any subcontract/contract agreement; and (8) Additional project specific qualifications and exclusions will be included if listed below.

BASE BID PRICE QUOTE, SCOPE OF WORK, AND PROJECT QUALIFICATIONS AND EXCLUSIONS:

1. Scope of work is per the revised Scope Of Work document dated 5-11-18.
2. Pressure washing will include shade structures at the windows where they occur. Windows will also be rinsed.
3. Water for pressure washing will be supplied at no cost to contractor.
4. Would suggest use of Rustoleum CV-740 Oil Base Industrial Enamel on exterior handrails for durability purposes.
5. Per Dan M., all hallway and foyer walls will be cleared (by GUSD personnel) of all hanging objects to include staples, pins and nails. Contractor to fill all holes.
6. On walls where famous quotations are present, the quotations will be blocked around. The upper level quotation walls are not in scope of work.
7. All surfaces not being painted will be carefully protected.
8. Price includes all labor, materials and lift equipment necessary to complete job.
9. Price breakdown
 88523.00 Interior Work
 17765.00 Exterior Work
 106288.00 Total

ALTERNATE BID PRICE QUOTE, SCOPE OF WORK, AND PROJECT QUALIFICATIONS AND EXCLUSIONS:

ALT #1:

QUOTED PRICES AS FOLLOWS:

Base Bid	106288.00	Alt. Bid #1		Alt. Bid #2	
----------	-----------	-------------	--	-------------	--


Cypress Painting & Decorating, Inc.

PO Box 3607, Carmel, California 93921-3607

Ph 831.624.9018 Fx 831.624.9022

Calif. Lic. No. 484643 Email: cypresspainting@sbcglobal.net

FAX QUOTE 5/20/18

TO	Gilroy Unified School District	PROJECT DESCRIPTION / LOCATION	PLANS DATED	SPECS DATED	ADDENDA NOTED
ATTN	Dan McAuliffe	Christopher High School-Interior & Exterior Painting			
FAX			SECTIONS QUOTED	X 09900	
PHONE	408-710-8480		Questions regarding this quote should be directed to John Ruskell at 831.601.1110 cell or 831.624.9018 office		
Copy To		OWNER'S NAME / CONTACT	Cypress Painting & Decorating, Inc. DIR number is 100020914		
Copy To					

STANDARD BID QUALIFICATIONS AND EXCLUSIONS:

Quoted per plans, paint specs, or documents viewed and noted herein; (2) Quote does not include costs to repair or correct acts of vandalism, acts of God, or other third party damages; (3) Quote based on regular work hours and does not include overtime costs; (4) General contractor and or Owner may be named as additional insured as appropriate; (5) Insurance coverage/endorsements of bidding firm will be acceptable to all parties providing liability limits are met. Due to the litigious nature of form CG 2010 and 2037, these endorsements will not be used; (6) Terms and conditions of any subcontract or lower-tier agreement to be negotiable to the mutual satisfactions of all parties, and executed prior to the start of work or issuance of certificates of insurance excepting those certificates of insurance providing "Evidence of Coverage" only, or samples provided for clarification of coverage and wording; (7) This quote to be included as an integral part of any subcontract/contract agreement; and (8) Additional project specific qualifications and exclusions will be included if listed below.

BASE BID PRICE QUOTE, SCOPE OF WORK, AND PROJECT QUALIFICATIONS AND EXCLUSIONS:

- Scope of work is per the revised Scope Of Work document dated 5-11-18.
- Pressure washing will include shade structures at the windows where they occur. Windows will also be rinsed.
- Water for pressure washing will be supplied at no cost to contractor.
- Would suggest use of Rustoleum CV-740 Oil Base Industrial Enamel on exterior handrails for durability purposes.
- Per Dan M., all hallway and foyer walls will be cleared (by GUSD personnel) of all hanging objects to include staples, pins and nails. Contractor to fill all holes.
- On walls where famous quotations are present, the quotations will be blocked around. The upper level quotation walls are not in scope of work.
- All surfaces not being painted will be carefully protected.
- Price includes all labor, materials and lift equipment necessary to complete job.
- Price breakdown
88523.00 Interior Work
17765.00 Exterior Work
106288.00 Total

ALTERNATE BID PRICE QUOTE, SCOPE OF WORK, AND PROJECT QUALIFICATIONS AND EXCLUSIONS:

ALT #1:

QUOTED PRICES AS FOLLOWS:

Base Bid	106288.00	Alt. Bid #1		Alt. Bid #2	
----------	-----------	-------------	--	-------------	--